

THE IMAGINARY ASIAN CHILDHOOD DREAM

O sonho imaginário da infância asiática

- A big cherry blossom tree, just like in the forest, having lived for many years and hiding many secrets.

- When a gentle breeze passes by, the petals flutter down to the ground, creating a beautiful and dreamy scene.



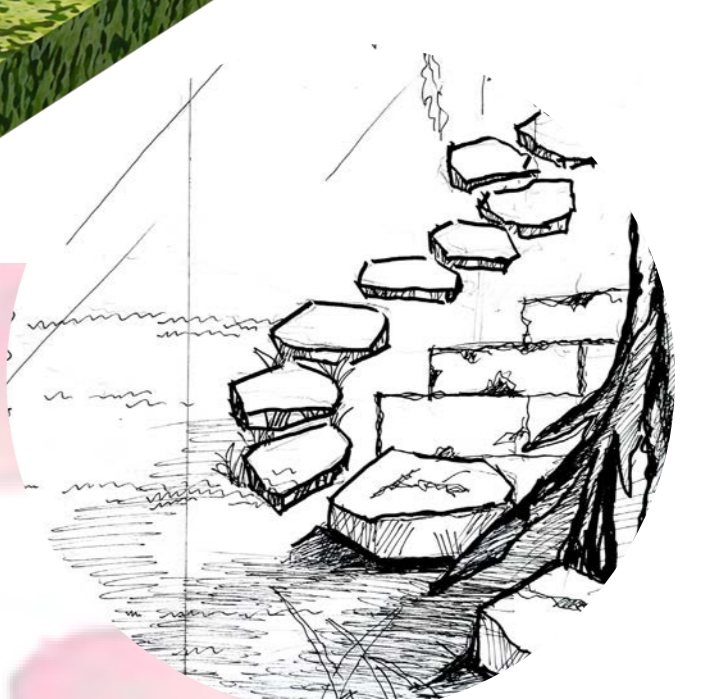
sitting on the branch, gazing at the distant scenery



flowering shrub

Cherry Blossom Trees Casting Reflections on the Water

Stone Steps Leading to Cherry Blossom Trees



suspended stone steps, reaching the tall branches of the tree. sit there, gazing at the distant scenery.



Garden Path

Water

Flowering Shrub

Artificial Artistic Tree

Shrub

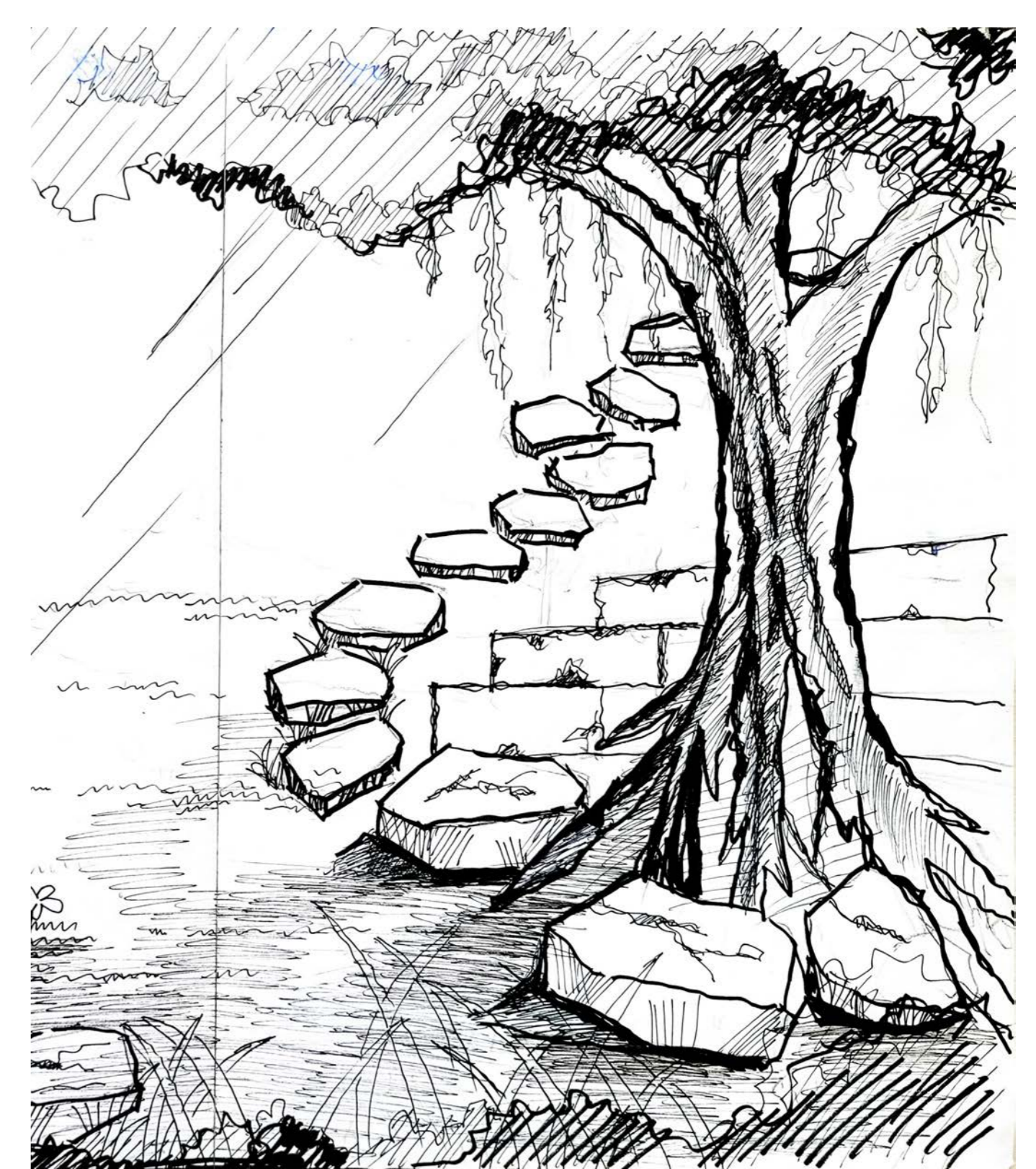


In the heart of imagination, there lies a garden, a sanctuary that transcends age and invites everyone to rediscover the enchantment of their childhood. This fantastical realm is a tapestry woven with memories, where the vibrant colors of youth paint the landscape.

At the center of this magical haven stands a majestic cherry tree, a symbol of the eternal spring that resides within the imaginary garden. Its branches reach towards the heavens, adorned with blossoms that dance on the breeze. These flying cherry blossoms breathe life into the dreams of childhood, resurrecting the pure joy and wonder that once filled the hearts of the young.

A serene water surface mirrors the depths of the soul, offering a glimpse into the child within. The reflection in the water whispers tales of innocence and untamed imagination, inviting visitors to dive into the reservoir of memories that define them. The garden's flora, meticulously arranged and cultivated, embodies the essence of Japanese culture. Each bloom, each leaf tells a story of tradition and beauty, capturing the spirit of a harmonious Asian garden as it exists in the fantastical realm of a child's mind. The fusion of grassy knolls, gravel pathways, sturdy stones, flowing water, and lush flora harmonize to create a picturesque landscape straight from the dreams of youth.

In this haven, time stands still, and the echoes of laughter and carefree days linger in the air. It is a sanctuary where the barriers between reality and imagination blur, allowing all who enter to be transported back to the simplicity and joy of childhood. The imaginary garden, with its symbolic cherry tree and reflective waters, becomes a vessel for the collective memories of youth, a timeless refuge where the spirit of a harmonious Asian garden thrives in the dreams of children. Every person, regardless of age, is warmly welcomed to soar back into the enchantment of their childhood dreams within this imaginary Asian garden.



Holik Katharina
Kerbl Sophie
Liu Hui

Garden Nr. 9
Professor Roland Wüch
Tutorin Teuber Louise
Institute of Landscape Architecture
University of Natural Resources and Life Sciences
Peter-Jordan Straße 82, A-1190 Vienna, Austria