

Step into



plot 10

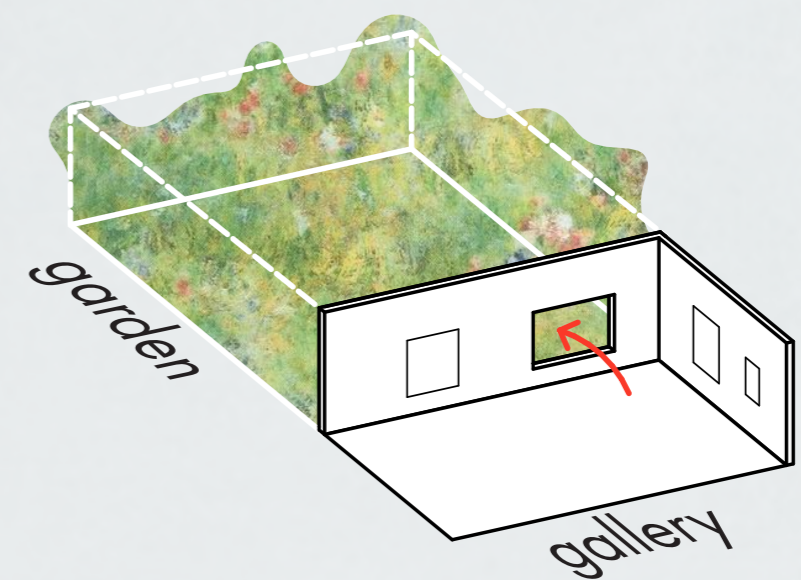


a work of Art

The idea

The focus of this garden is the relationship between its existence as a work of art and as a space for living. At first the Garden is presented like an artwork in a gallery where visitors are only able to watch a garden behind the picture frame. However this barrier is meant to be crossed. By entering through the picture frame visitors can not just see but “use” the garden. In this way visitors experience the duality of a garden as a work of Art.

Concept

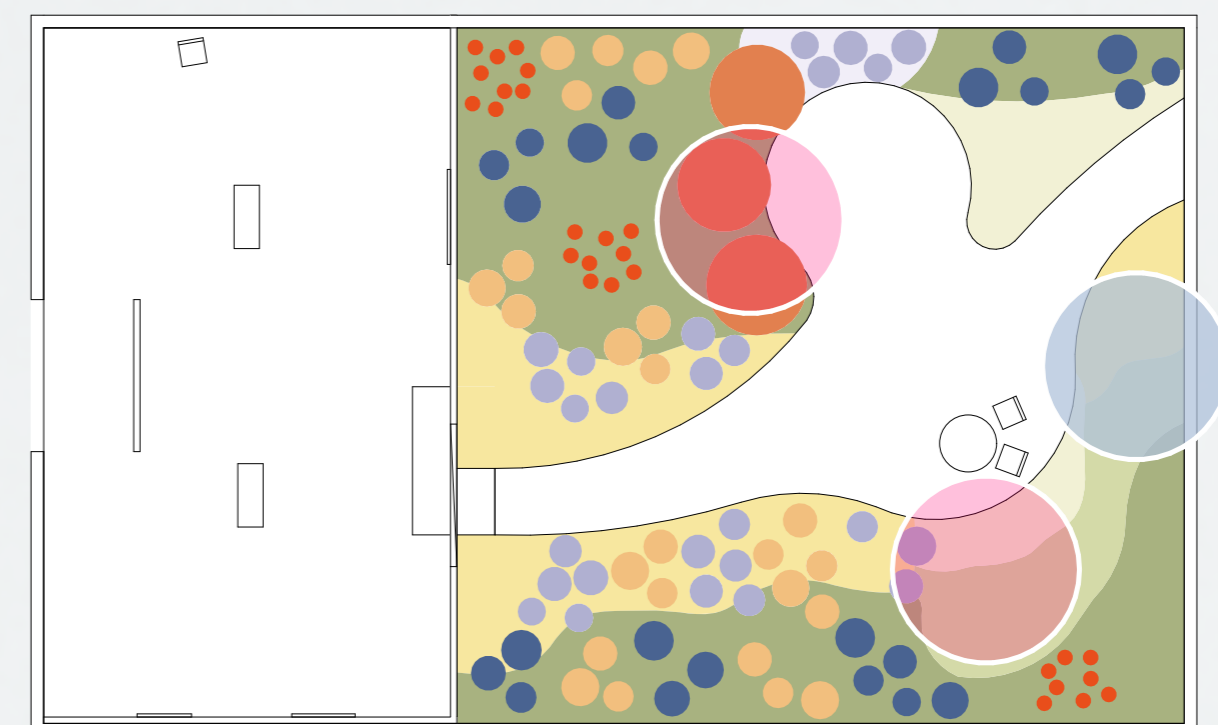


Section A-A'



Plant concept

Ground plan



- Mixed aromatics
- Groundcover yellow flower
e.g.: Santolina chamaecyparissus
- Groundcover and hemerocallis
- Big woody plants
e.g.: Hibiscus syriacus
- Small woody plants 50-150 cm
e.g.: Hydrangea macrophylla
- Violet flowering Plants 30-100cm
e.b.: Salvia nemorosa
- Violet flowering Plants
e.g.: Lavandula angustifolia
- Red flowering Plants 30-100cm
e.g.: Lobelia x speciosa
- Yellow flowering plants
e.g.: Echinacea paradoxa