

Kyoto Prefectural University
京都府立大学

<http://www2.kpu.ac.jp/English/aboutkpu.html>

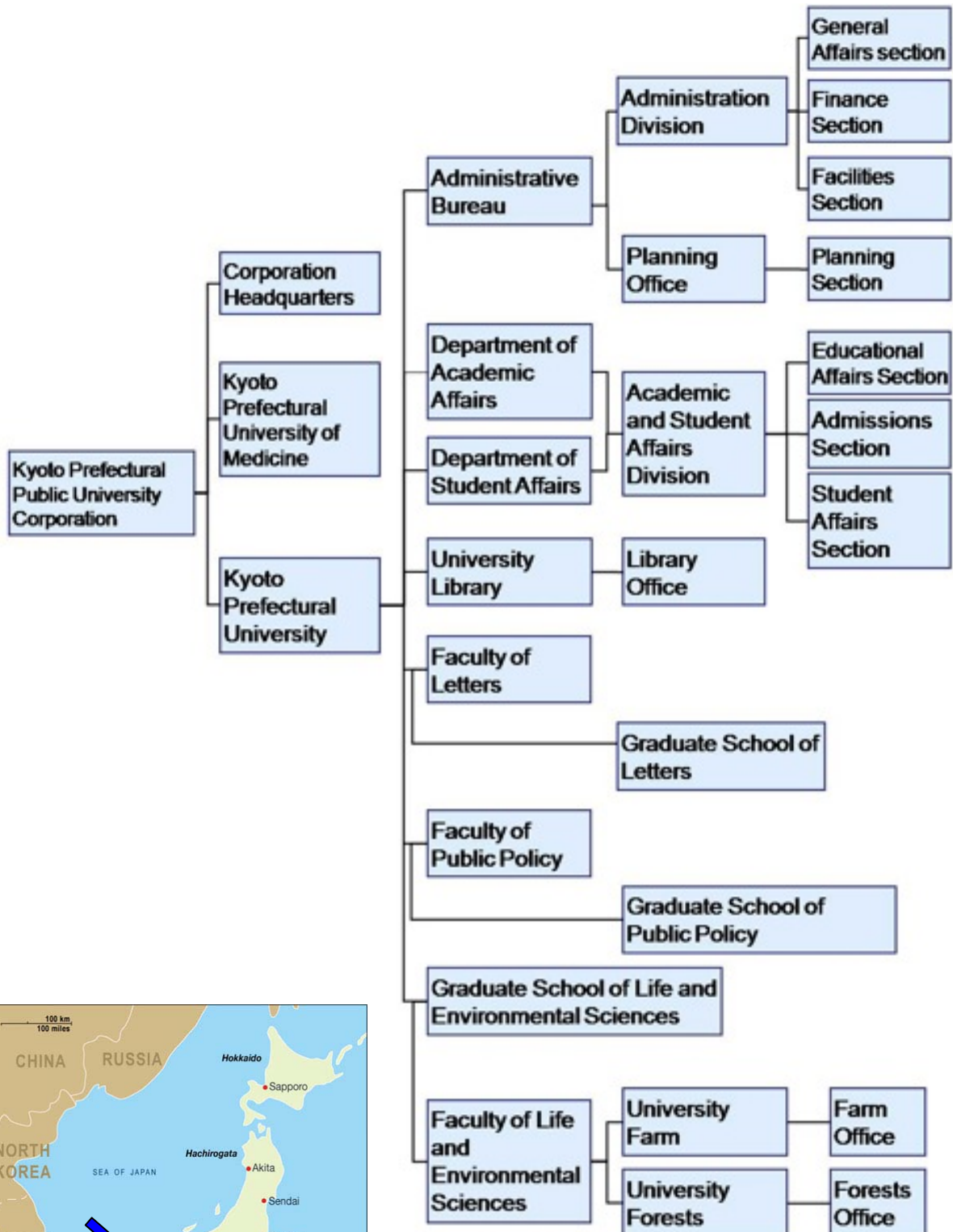


History of KPU

- **April 1, 1895:** Kyoto Prefectural Agricultural School is established in Omiya Village, Kyoto Prefecture
- **September 18, 1896:** The school is moved to the new facilities in Katsura, Kyoto Prefecture
- **April 1, 1918:** Classes are given at the new schoolhouse in Shimogamo Village
- **April 1, 1927:** Kyoto Prefectural Women's Vocational School opens
- **April 1, 1933:** Approval is granted for Kyoto Prefectural Women's Vocational School to move to new facilities in Katsura, Kyoto Prefecture
- **April 1, 1944:** Kyoto Prefectural College of Agriculture and Forestry opens.
- **February, 1949:** Under the School Education Act, the establishment of a new university is approved, based on integration of the Kyoto Prefectural Vocational School of Agriculture and Forestry and Kyoto Prefectural Women's Vocational School
- **April 1, 1949:** Saikyo University is inaugurated as a new university having two faculties, i.e. the Faculty of Letters and Domestic Science and the Faculty of Agriculture
- **April 1, 1951:** Saikyo University establishes Saikyo Women's Junior College
- **May 1 1959:** Celebrating the 10th anniversary of its establishment, Saikyo University changes its name to "*Kyoto Prefectural University*"
- **April 18, 1962:** University facilities at the present location in Shimogamo, Kyoto City
- **April 1, 1970:** The Faculty of Letters and Domestic Science is divided into the Faculty of Letters and the Faculty of Domestic Science
- **April 1, 1977:** The Faculty of Domestic Science is renamed into Faculty of Life Sciences
- **April 1, 1983:** Graduate School of Agriculture establishes a Doctoral Course
- **November 5, 1995:** Kyoto Prefectural University celebrates the 100th anniversary of its foundation
- **April 1, 1997:** Acceptance of applications for the Women's Junior College is discontinued.
- **April 1, 2003:** Doctoral courses are established in the Department of Japanese and Chinese Literatures (Graduate School of Letters), the Department of Welfare Society (Graduate School of Welfare Society), and in the Department of Environmental Information (Graduate School of Human & Environmental Sciences)
- **April 1, 2008:** The Kyoto Prefectural Public University Corporation is established for management of Kyoto Prefectural University and Kyoto Prefectural University of Medicine. New system consisting of 3 faculties, the Faculty of Letters, the Faculty of Public Policy, and the Faculty of Life and Environmental Sciences. The Graduate School of Public Policy and the Graduate School of Life and Environmental Sciences are established.



**Organizational structure of KPU,
map of Japan with Kyoto (arrow)**



Kyoto City

Kyoto city, in which Kyoto Prefectural University is located, prospered as Japan's capital from 794 to 1869. At present, as the center of Japan's culture and tradition, Kyoto is attracting many tourists, visitors on business as well as students and scientists. The city area and its environs are dotted with temples, shrines and castles, which are highly valued cultural assets. Among them, fourteen temples and shrines have been registered by the UNESCO World Heritage, as "Historic Monuments of Ancient Kyoto."

