



Vienna's forest and agricultural department Magistratsabteilung 49

IUFRO-Exkursion, 11.5.2016,
Andreas Januskovecz, Head of MA 49 - Forestry Office of the City of Vienna



Stad**t**+Wien
Wien ist anders.

Vienna – land use

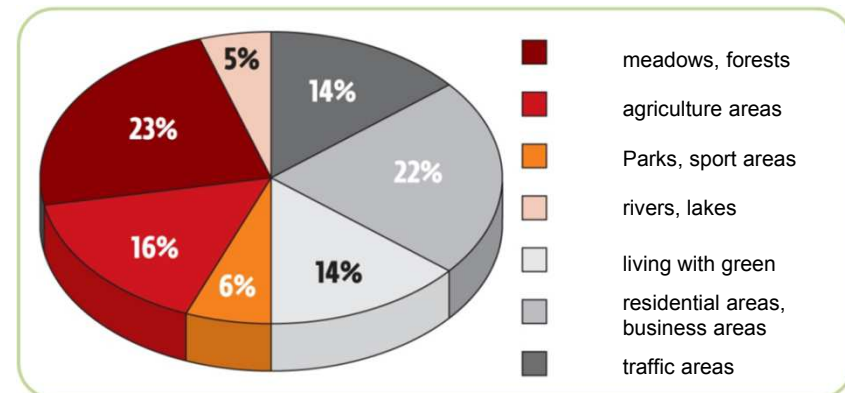
Total area = **41,500** hectares

Land use - **25%** forests and meadows

URBAN AREA

Vienna 2015

Total area	41,487 ha
Built-up area	14,750 ha (35.6 %)
Green space	18,889 ha (45.5 %)
Bodies of water	1,913 ha (4.6 %)
Roads, streets	5,936 ha (14.3 %)
Length of city boundaries	136.5 km
Highest elevation	Hermannskogel (543 m)
Lowest elevation	Lobau (151 m)



Vienna's – population

1,800,000 inhabitants

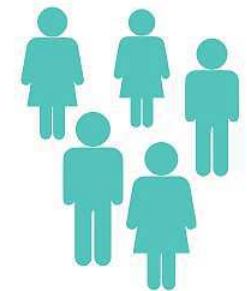
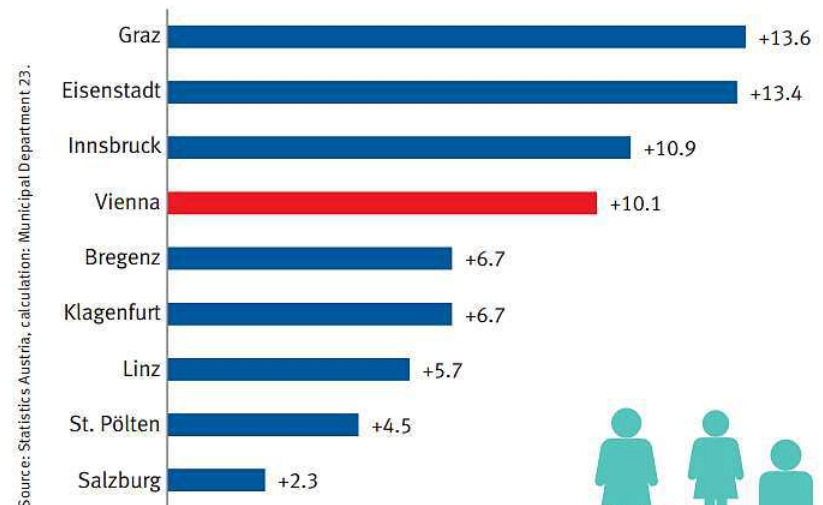
increasing population

POPULATION

Population in Vienna 2014

Demographic information	total	men	women
Population *	1,797,337	867,633	929,704

Population Development 2005–2015 | in %



Vienna's – budget 2014

Vienna's expenses
= EUR **12,340 millions**

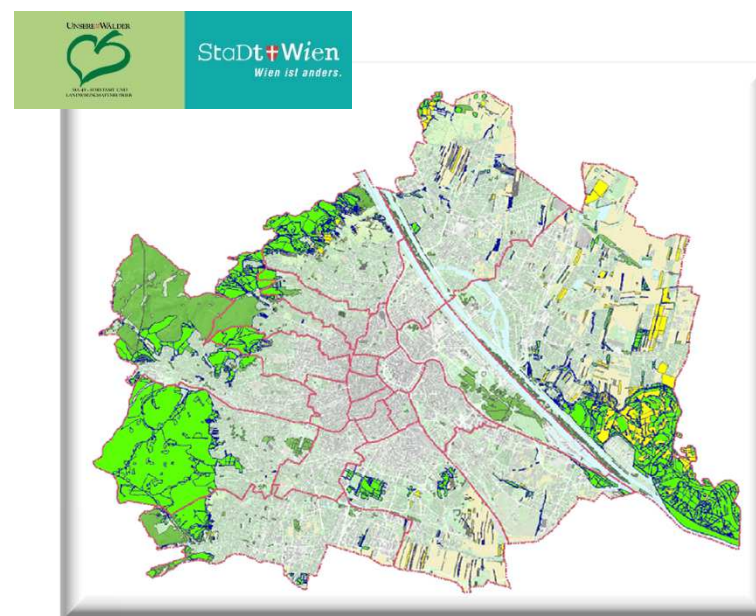
forest department expenses
= EUR **36 millions (0.3%)**

Annual accounts 2014

Type of expenditure	Expenditures in EUR million	Share of total expenditures in %
Total	12,344.0	100.0
Payments to staff	2,638.6	21.4
Retirement pensions and related payments	1,341.0	10.9
Durables and consumables, administration and operating expenses	1,370.3	11.1
Regular transfer payments	4,410.7	35.7
Debt service	788.8	6.4
Capital investments, transfers, and loans to boost investment	1,615.7	13.1
Other expenditure *	178.9	1.4

Source: City of Vienna Annual Accounts, calculations by MA 23.

* This category essentially includes allocations to reserve funds with respect to district budgets, real estate, funding money, and compulsory schools of general education.



City of Vienna – number of employees

municipal administration

29,000 employees

forest department

322 employees (1.1%)

PUBLIC ADMINISTRATION

City Administration staff 2013

Staff	Staff * at year-end		
	total	men	women
Total	29,456	14,056	15,400
Public officials	11,587	6,402	5,185
Contractual employees	17,869	7,654	10,215

Source: Chief Executive Office of the Vienna City Administration.

* Municipal staff in the strict sense of the word.

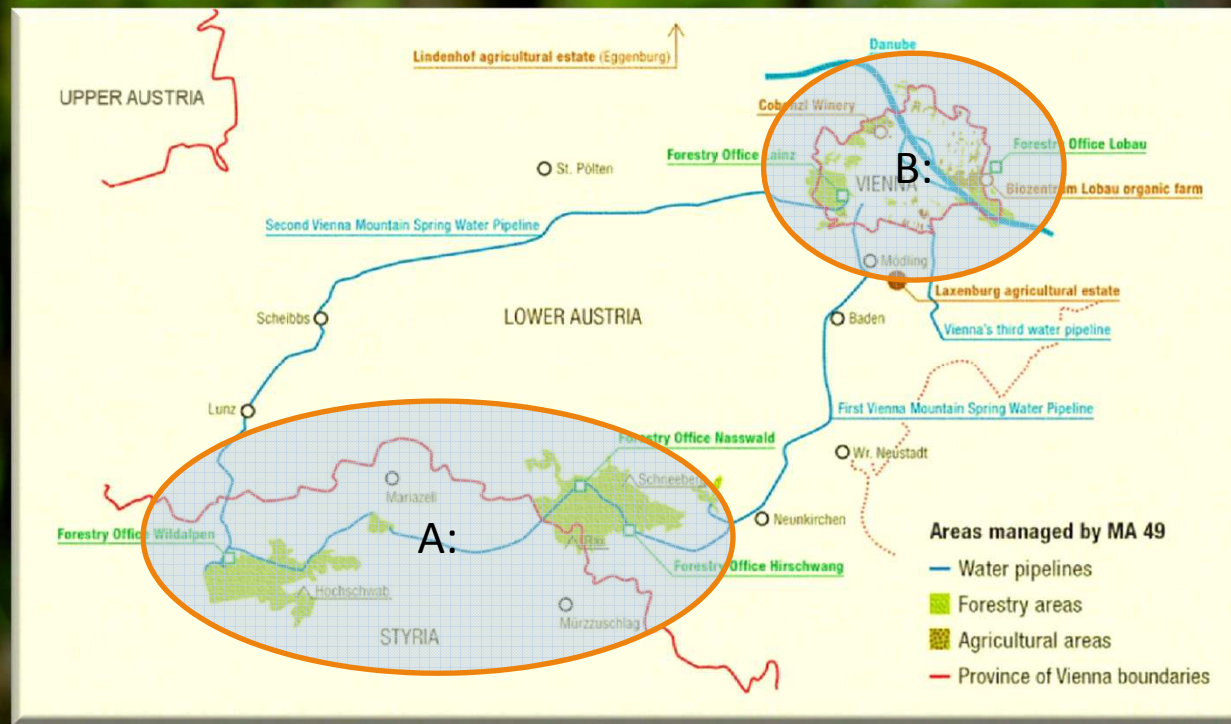
other organizational forms

City and Federal Province of Vienna staff outside the City Administration proper, 2013

Staff	Staff at year-end		
	total	men	women
Wiener Wohnen – Housing in Vienna	652	382	270
Public officials	393	231	162
Contractual employees	259	151	108
Wiener Krankenanstaltenverbund – Vienna Hospital Association	27,390	7,672	19,718
Public officials	7,533	2,317	5,216
Contractual employees	19,857	5,355	14,502
Wien Kanal – Vienna Waste Water Management	553	517	36
Public officials	359	340	19
Contractual employees	194	177	17
Wiener Stadtwerke – Vienna Public Utilities	8,341	7,269	1,072
Public officials	5,270	4,670	600
Contractual employees	3,071	2,599	472
Teaching staff of the Federal Province of Vienna	12,622	2,211	10,411
Public officials	5,646	697	4,949
Contractual employees	6,976	1,514	5,462

Source: Municipal Dept. 2 – payroll accounting for teaching staff working for the Province of Vienna, and pension payment statistics by the Chief Executive Office of Personnel and Internal Auditing.

forest department – main business activities



**A: 33,000 hectares
SPRING PROTECTIVE-FORESTS**



**B: 8,650 hectares
URBAN-FORESTS**

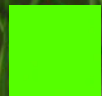


**B: 2,000 hectares
AGRICULTURAL-AREA**

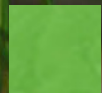
forest department – situation in vienna

1905 Vienna decided
to protect and to preserve the
,Wald- und Wiesengürtel'
by law

Woodland
8,000 hectares (19%)



Owned by the City of Vienna
5,700 hectares



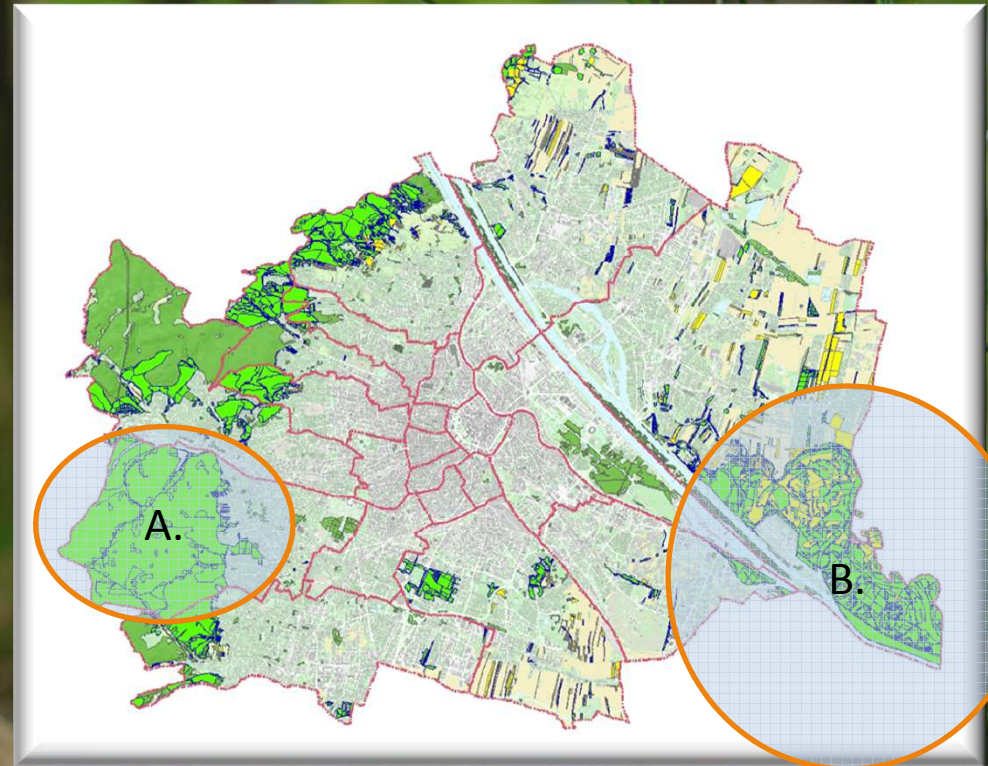
Other owners
2,300 hectares



Owned by the City of Vienna
1,100 hectares Bio-Agricultural land in Vienna

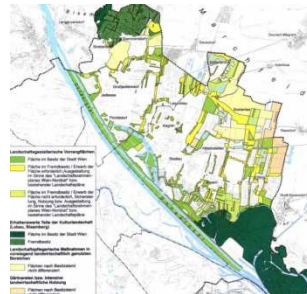


A. nature reserve 'LAINZER - TIERGARTEN' - 2,500 hectares
B. Vienna's part of 'DONAU-AUEN NATIONAL PARK' - 3,000 hectares



Vienna's strategic development plan (STEP 2025)

vienna's build-up-areas enlarge



„STEP“ includes the development of

forst-meadow-open-land-networks

especially in the eastern and south-western areas of Vienna

(e.g. „Norbert-Scheed-Wald“)

protected landscapes and nature reserves are taboo

They are protected by national law and by EU guidelines

„Nationalpark Donau-Auen“ (Vienna's part), the nature reserve „Lainzer Tiergarten“, protected landscapes like „Liesing“ and „Bisamberg“, parts of the „Biosphärenpark Wienerwald“ are all managed by the forest department

develop Vienna's ,Green Belt'



afforestation and landscaping projects realised by MA 49 are well-recognised.

From 1956 to 2013 **550 hectares** wood- and openland have been newly developed, more than four million trees and shrubs have been planted. (e.g. Laaerberg , Wienerberg, Donauinsel)

there is further demand for **green areas in new residential zones,**



and there is demand for **connecting areas in order to establish green-networks**

forest department offers different levels of ‚New Green‘

services:

landscape planning, soil-cultivation, afforestation, grass seed, early preservation works.

landscape planning, soil-cultivation, afforestation, stand-alone trees, grass seed, early preservation works, **simple road constructions**, Pavilion, playground, nature conservation elements, benches, litter boxes.

landscape planning, **area shaping**, soil-cultivation, afforestation, grass seed, early preservation works, **road constructions**, pavilion, playground, equipment, benches, litter boxes, information boards.

‚Early Green‘

= EUR 3/m²



‚Recreation Green‘

= EUR 13/m²



‚Urban-Green‘

= EUR 30/m²



develop and manage ,recreation forest-meadow-openland‘

compose landscape - elements



services:

landscape new recreation areas, build walkways

afforest new recreation forests

(= EUR 30,000 / hectare)

plant meadows, young stand-alone trees, groups of trees

**offer equipment,
offer zones for special use**

**cutting of grass, hedges,
forest edges**

urban-situation causes additional duties to manage

ownership protection, keep quality of green areas



services:

manage long borderlines

(650 kilometres, thousands of neighbors)

save boundary-lines,

save boundary markers



deal with litter and waste,

**in order to keep the quality of
recreation areas high**

urban-situation and society cause additional duties

risk management, solve target conflicts



services:

felling of dangerous trees, to avoid risks for visitors and objects,

(question of conditional intent, liability risks)

Logging-volume: **9,000 M3** / year



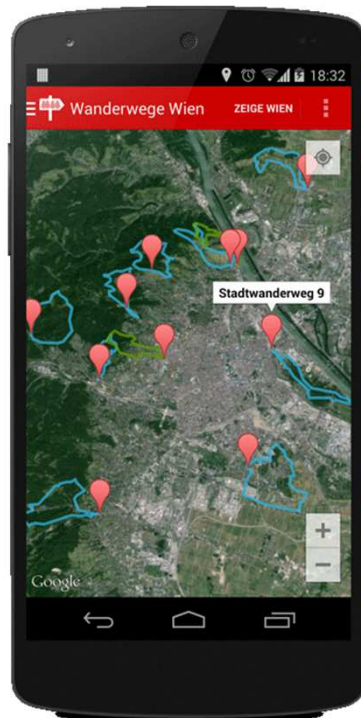
if possible and compatible with targets

dead wood and biotop-trees

have to be preserved

manage hiking routes for visitors

11 city-hiking-trails - 240 kilometres long, well-signposted, safe



services:

**inform and guide visitors,
deal with user-conflicts, organise multi-
purpose use,**

**offer attractive open land and wood
views, care for safe conditions**

forest department offers information and environmental education



woodland education centres:

In play-based programs, led by forest rangers, children learn to understand nature and forest-ecosystems.

Visits are free for school children and teachers:

180 days per year, 3,500 school children

‘Waldschule Ottakring’ (2014):

Costs = EUR 60,900

Incomes = EUR -19,900



Visitor-center:

for the Viennese section of the ‘Donau-Auen National Park’:

Introduction to the issues of Danube wetlands, themed walks, exhibitions, research evenings.

20,000 guests per year

individual forest tending and regeneration

by means of individual silvicultural programs respecting visitors and nature



services:

forest tending works

(in young and mid-old stages)



individual felling of trees

to bring forward natural regeneration

(in old stages)

Logging-volume: **17,000 M3** / year

Example 1:

urban forest offices ‚Forstverwaltung Lainz‘ and ‚Forstverwaltung Lobau‘
(including areas in Vienna and near Vienna)

Forest offices		FV Lainz + FV Lobau						
Cost-Accounting	Balance		Costs		Incomes		Human Resources	
	EUR	%	EUR	EUR	Ratio%	HOURS_INPUT	%	
Result 2015	11.817.000	100	13.906.000	-2.089.000	15	264.000	100	
administration	3.384.000	29	3.430.000	-46.000		96.500	37	
facilities/infrastructure	3.123.000	26	3.683.000	-560.000	15	42.500	16	
silviculture/tending	309.000	3	309.000			6.600	3	
silviculture	106.000	1	534.000	-428.000	80	12.800	5	
public services	3.916.000	33	4.333.000	-417.000	10	71.200	27	
additional services	979.000	8	1.617.000	-638.000	39	34.400	13	
Landuse	Hectares		Costs/Hectare		Incomes/Hectare			
Total Area	9.118		1.530		-230			
forests	6.711							
meadows	847							
other land-use type	1.221							
Volume	M3		M3/Hectare					
	2.133.000		318					

Remark: ‚Administration‘ does include planning, forest-supervision, monitoring, etcetera

Example 2:

urban forest district - fragmented, isolated patches of young forests and meadows, in close contact to dense built-up areas, long boarderlines, much-frequented by visitors

Forest District		"Wohlfahrtswälder-Grünzüge-Ost"						
Cost-Accounting	Balance		Costs		Incomes		Human Resources	
	EUR	%	EUR		EUR	Ratio%	HOURS_INPUT	%
Result 2015	666.000	100	760.000		-95.000	13	16.200	100
administration	148.000	22	148.000		0		3.400	21
facilities/infrastructure	94.000	14	166.000		-72.000	43	4.200	26
silviculture/tending	19.000	3	19.000		0		400	2
silviculture	71.000	11	83.000		-12.000	14	2.100	13
public services	336.000	50	340.000		-4.000	1	6.000	37
additional services	-2.000	0	5.000		-7.000		100	1
Landuse	Hectares	%	Costs/Hectare		Incomes/Hectare		Hours/Hectare	
Total Area	320	100	2.380		-300		51	
forests	223	70						
meadows	79	25						
other land-use type	18	6						
Volume	M3		M3/Hectare					
	15.100				68			

Remark: 'Administration' does include planning, forest-supervision, monitoring, etcetera

Example 3:

urban forest district - well-joined patches of young forests and meadows, without direct contact to built-up-areas, but much-frequented by visitors

Forest District "Donauinsel"							
Cost-Accounting	Balance		Costs	Incomes	Human Resources		
	EUR	%	EUR	EUR	Ratio%	HOURS_INPUT	%
Result 2015	171.000	100	171.000	0	0	3.000	100
administration	55.000	32	55.000	0		1.300	43
facilities/infrastructure	6.000	4	6.000	0	0	100	3
silviculture/tending	1.000	1	1.000	0		0	0
silviculture	15.000	9	15.000	0	0	400	13
public services	93.000	54	93.000	0	0	1.100	37
additional services	0	0	0	0		0	0
Landuse	Hectares	%	Costs/Hectare	Incomes/Hectare	Hours/Hectare		
Total Area	339	100	500	0	9		
forests	196	58					
meadows	131	39					
other land-use type	12	4					
Volume	M3	M3/Hectare					
	21.900	112					

Remark: ‚Administration‘ does include planning, forest-supervision, monitoring, etcetera

Example 4:

urban forest district - well-joined patches of large forests and meadows, long borderlines to built-up areas

Forest District "Sievering-Neuwaldegg"							
Cost-Accounting	Balance		Costs	Incomes		Human Resources	
	EUR	%	EUR	EUR	Ratio%	HOURS_INPUT	%
Result 2015	721.000	100	969.000	-248.000	26	22.300	100
administration	102.000	14	102.000	0		3.500	16
facilities/infrastructure	324.000	45	380.000	-56.000	15	6.600	30
silviculture/tending	14.000	2	14.000	0		200	1
silviculture	24.000	3	86.000	-62.000	72	2.700	12
public services	247.000	34	374.000	-127.000	34	8.900	40
additional services	10.000	1	13.000	-3.000		400	2
Landuse	Hectars	%	Costs/Hectare	Incomes/Hectare		Hours/Hectare	
Total Area	1.007	100	960	-200		22	
forests	832	83					
meadows	129	13					
other land-use type	46	5					
Volume	M3		M3/Hectar				
	288.143			346			

Remark: ‚Administration‘ does include planning, forest-supervision, monitoring, etcetera

comparison 5:

urban garden department – **intensive** park-management

Parks, playgrounds, alley trees, flower beds, dog zones, equipment,...



some features:

Area to manage = 1,900 Hectares

flower beds = 4,5 Hectares

alley trees = 100,000

special areas = 1,000

Costs/Hectare = 41,900 EUR

Incomes/Hectare = 2,900 EUR

thank's for attention and listening

(Franz Fischer – franz.fischer.ff1@wien.gv.at)

More facts...

+ <https://www.wien.gv.at/stadtentwicklung/studien/pdf/b008440.pdf> (english version)

+ Rechnungsabschluss der Bundeshauptstadt Wien für das Jahr 2014, Wien 2015