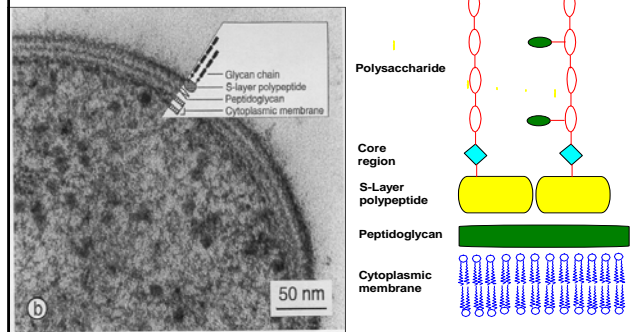


## Structure and function of bacterial cell wall polysaccharides

Reaction mechanisms of glycosidases

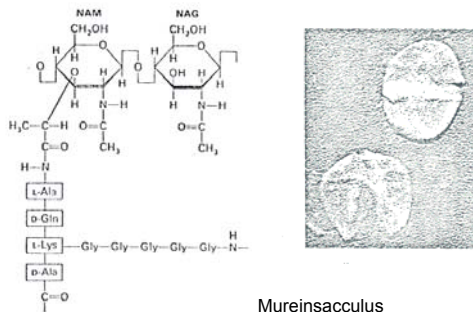
## Bacterial cell surface carbohydrates

### S-Layer glycoproteins in *Archaea*



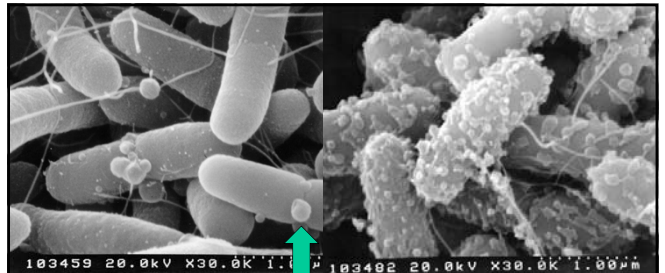
*Aneurinibacillus thermoaerophilus* DSM 10155

## Peptidoglycan



Mureinsacculus of *Staphylococcus aureus*

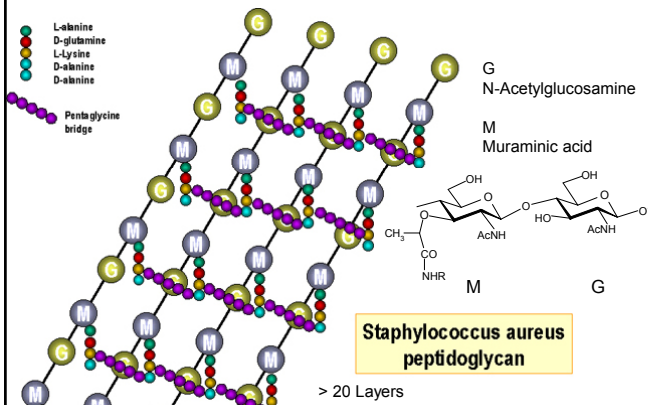
Structure of peptidoglycans



Quelle: <http://www.cmdr.ubc.ca>

Cell wall lysis of *Escherichia coli* cells  
Induced by cationic peptides

## Gram-positive bacteria: peptidoglycan



## Biosynthesis of peptidoglycan

