

# Master thesis 2014/15



## *Impact of hydropeaking on benthic invertebrates*

**Aim:** Assess & observe drift activities of different benthic invertebrate species following abruptly increased flow conditions (hydropeaking).

### **Contact:**

Lisa Schülting, M.Sc.: [lisa.schuelting@boku.ac.at](mailto:lisa.schuelting@boku.ac.at);

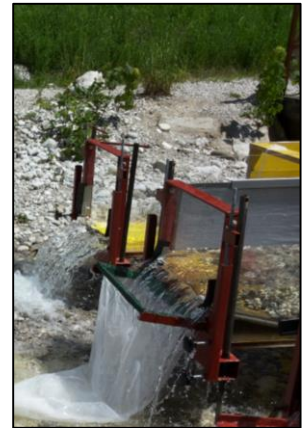
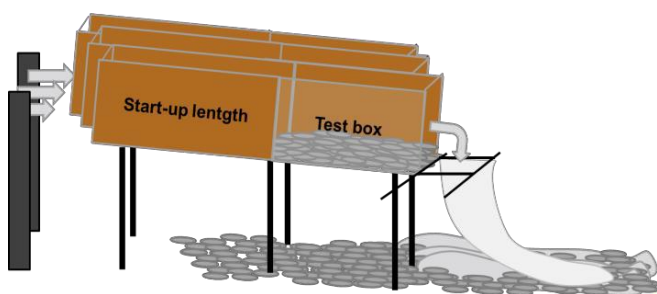
Ass. Prof. Wolfram Graf: [wolfram.graf@boku.ac.at](mailto:wolfram.graf@boku.ac.at)

**Time frame:** 6-12 month

**Location:** Vienna; possibly Lunz (field work)



HyTEC **Hydromorphology and Temperature Experimental Channel**



### **Tasks:**

- Laboratory work: sorting, identifying and counting
- Data input and statistical analyzes
- Possibly further field work/experiments in Lunz am See
- Literature research

### **Requirements:**

- Interest for benthic ecology
- Interdisciplinary working skills
- Communication skills



