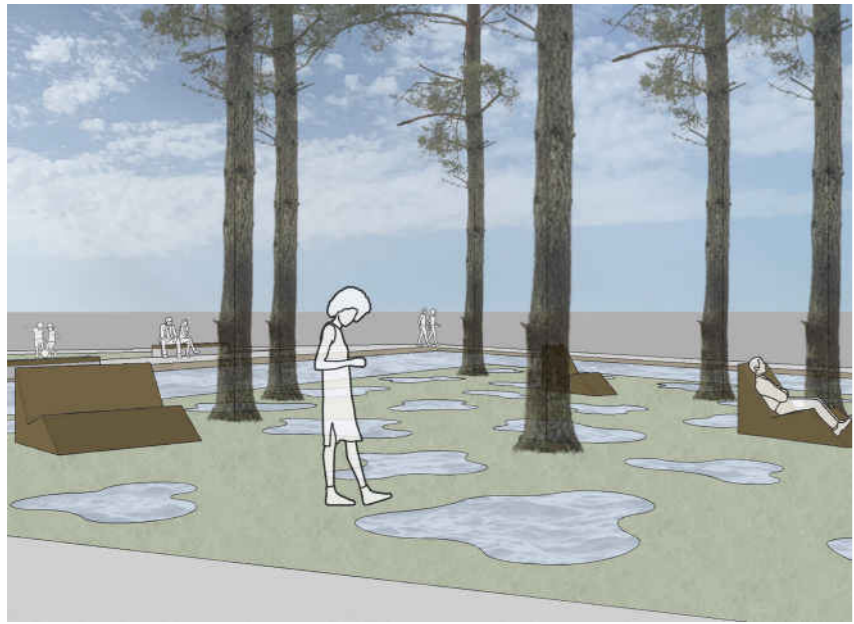
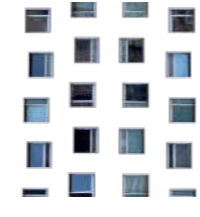
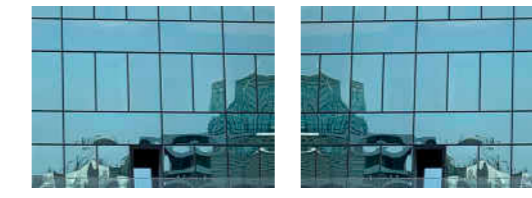
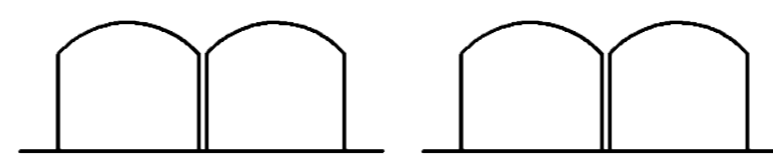
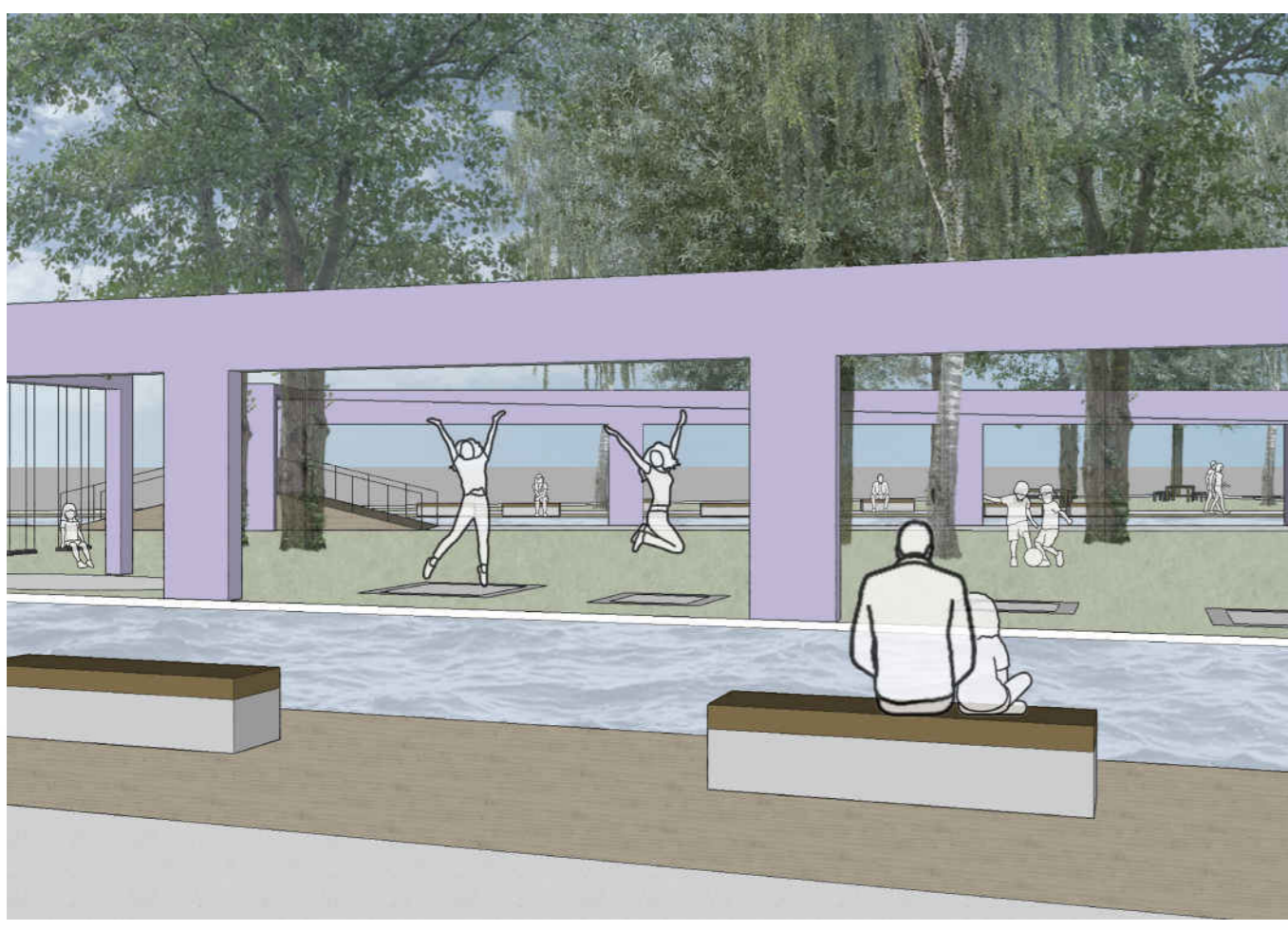


# ROOM FOR REFLECTION



SCHNITT A-A' M 1:250



±2.4m ü. W.N.

- LEGENDE
- ORTBETON
  - HOLZSTEG
  - WASSER
  - RASEN
  - RIESEL

GRUNDRISS M 1:250



**Gasometer - Park | 1110 Marie Schütz 11914226**  
 Projekt II zu Landschaftsarchitektur | LVNr 852.107 | WS 2021/2022  
 Institut für Landschaftsarchitektur | Lektorin Katja Simma | Tutorin Sabrina Silbernagl

