

# Uniform guideline for layout of LIGNOVISIONEN - pocket book format (A5)

## Instructions for authors

### General remarks

Manuscripts and correspondence should be addressed to the following address:

Universität für Bodenkultur Wien  
Department für Materialwissenschaften und Prozesstechnik  
Institut für Holzforschung  
(Redaktion LIGNOVISIONEN)  
z.Hd. Univ.Prof. Dr. Alfred Teischinger

Peter Jordan Straße 82  
A-1190 Wien (Vienna), Austria

Tel.: 0043 (0)1 47654 4250,  
Fax.: 0043 (0)1 47654 4295,  
E-Mail: alfred.teischinger@boku.ac.at - Cc: robert.stingl@boku.ac.at

### Manuscripts

#### A General layout and typing

The manuscript must be complete and ready for printing. Corrections and galley proofs must be restricted to printer's errors only.

Manuscripts should be typed with one-line spacing, writing type: Tahoma – 9 pt and a wide margin. The number of figures should correspond to the length of the written text.

#### Layout guidelines

Use the automatic page numbering function to number the pages.

Do not use field functions.

Use the table function of your word processing program, not spreadsheets, to make tables.

For indents use tab stop or other commands, not the space bar.

#### Text

The title heading should be followed by each author's name, affiliation and complete mailing address. The text should be preceded by a short English summary (maximum 1500 signs).

The main text should be well structured, with major and minor headings for sections, following the system of decimal classification.

for example:

<b>2</b>	<b>major heading</b>	<b>(Tahoma – 9 pt - bold)</b>
<b>2.1</b>	<b>first minor heading</b>	<b>(Tahoma – 9 pt - bold)</b>
2.1.1	second minor heading	(Tahoma – 9 pt)

#### Dimensions and units

The metric system must be used. SI units are recommended. Compound units are given the proper exponent without a point (for example: O<sub>2</sub>, g<sup>-1</sup>).

## References

Make all references in text by author and year of publication. For three and more authors, cite the first only and use et al. (for example: Mayer 2002, Brown, Miller 1999, Fellner, Müller et al. 2001) List all references alphabetically by first authors under the heading references.

- Article: Müller A, Winkelmann J, Fischer J (1996) Backbone Family of Equations of State: 1. Nonpolar and Polar Pure Fluids. American Institute of Chemical Engineers Journal 42: 1116 – 1126  
 Teischinger A, Freiheit B (1998) Die Österreichische Gesellschaft für Holzforschung im Rückblick – Geschichte, Ideen, Personen. Holzforschung und Holzverwertung 50 (6): 107 - 108
- Book: Wassipaul F (1973) Die Entwicklung der Technologie in der Holzwirtschaft. In: 100 Jahre Hochschule für Bodenkultur in Wien, Fachveranstaltungen Bd. IV. Universität für Bodenkultur, Wien, Page 241 – 253  
 Sinclair S (1992) Forest products marketing. McGraw Hill, New York, NY, Page 403
- Internet: Sassus F. M Fournier (1995) Longitudinal growth strains and drying shrinkage in tension wood poplars. IUFRO XX World Congress, Tampere, Finland.  
<http://www.metra.fi/conf/iufro95abs/d5pos13.htm> (8 June 1998)

## Tables

All tables and figures should be cited in the text.

for example: ... tree quality (Fig 1) leads to processing trees using saw milling for timber (Tab 1) and ....

Each table has its own number (Tab 1 - ....) and a complete heading. The legend should be placed on the beginning of the table. The printing page is max. 120 x 170 mm. Tables and figures may be printed up to a full page in width.

for example:

**Tab 1 – Select definitions for science and development**

Begriff	Definition	Quelle
Grundlagenforschung	Erweiterung der wissenschaftlichen und technischen Kenntnisse, die nicht auf industrielle und kommerzielle Zwecke ausgerichtet sind.	EU-Amtsblatt <sup>1</sup> Nr. C 045 vom 17/02/1996
Angewandte Forschung (industrielle Entwicklung)	Planmäßiges Forschen mit dem Ziel, diese Kenntnisse zur Entwicklung neuer Produkte, Verfahren oder Dienstleistungen oder zur deutlichen Verbesserung bei bestehenden Produkten, Verfahren oder Dienstleistungen zu nutzen.	EU-Amtsblatt Nr. C 045 vom 17/02/1996
Experimentelle Entwicklung	Umsetzen der industriellen Forschung in einen Plan für neue oder verbesserte Produkte, Verfahren oder Dienstleistungen.	EU-Amtsblatt Nr. C 045 vom 17/02/1996
Technologie	Systematische Anwendung wissenschaftlicher Erkenntnisse und anderen organisierten Wissens bei der Lösung praktischer Aufgaben.	Wassipaul 1973
Holztechnologie	Beschreibung und Erforschung der technischen Nutzbarmachung des Rohstoffes Holz im mechanischen und chemischen Bereich unter Auswertung der Erkenntnisse der Holzforschung.	Mombächer 1987

<sup>1</sup> EU-Amtsblatt laut.....

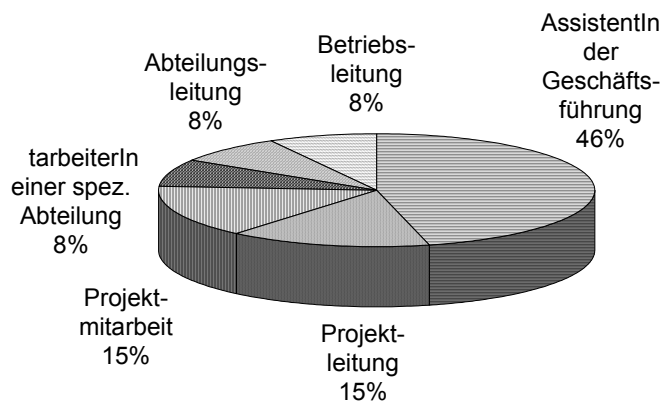
## Figures

All figures should be cited in the text.

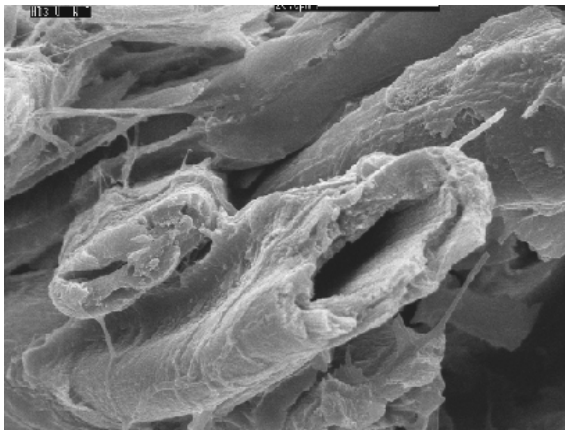
for example: ... tree quality (Fig 1) leads to processing trees using saw milling for timber (Tab 1) and ....

Each figure (Fig 1 - ....) has its own number and a complete heading (at the end of the figure). All symbols used must be explained in the caption, the legend or in the figure. The printing page is 120 x 170 mm. The preferred figure format is TIFF for halftone illustrations or JPG-format. Is the figure on a own file – please include the figure-number on the file. Scanned line drawing should be digitized with a minimum resolution of 800 dpi relative to the final figure size.

for example:



**Fig 1 – Jobs of the alumni of FH-students (IWI – Erhebung 2000)**



**Fig 2 – Defibrillated fibre of a MDF-board**

## Data format

Save your paper in two versions:

1. Word - Office 2000 or Office Xp
2. in RTF (Rich Text Format) or PDF-format

## General information on data delivery

Please send us a zip file to: [alfred.teischinger@boku.ac.at](mailto:alfred.teischinger@boku.ac.at) - Cc: [robert.stingl@boku.ac.at](mailto:robert.stingl@boku.ac.at)  
or on any of the following media: on a diskette, on a ZIP cartridge or on a CD-ROM