



University of Natural Resources
and Applied Life Sciences, Vienna

Emissions from animal husbandry in Austria: assessment and reporting

Amon, B., Hörtenhuber, S., Anderl, M., Mitterböck, N.,
Pöllinger, A.

XXXIV CIOSTA CIGR V Conference 2011
29th – 30th June 2011



University of Natural Resources
and Applied Life Sciences, Vienna

University of Applied Life Sciences and Natural Resources
Department of Sustainable Agricultural Systems
Division of Agricultural Engineering

Barbara Amon, Stefan Hörtenhuber

Cooperation: Swiss College of Agriculture, Austrian Chamber of Agriculture, Austrian Environment Agency, Federal Research Centre for Agriculture in Alpine Regions, Statistics Austria

Acknowledgements. The work was funded by the Austrian Federal Ministry of Agriculture, Forestry, Environment and Water Management



umweltbundesamt^U
PERSPEKTIVEN FÜR UMWELT & GESELLSCHAFT

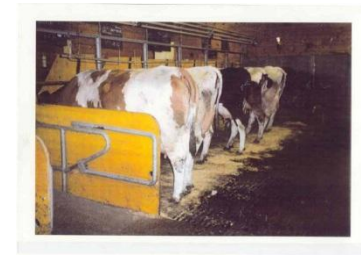


Background



University of Natural Resources
and Applied Life Sciences, Vienna

- Countries must annually report emissions.
- Emission inventories must be transparent, consistent, comparable, complete and accurate.
- It is therefore necessary to estimate emissions by applying models that link activity data to emission factors to calculate net emissions. Those models should offer the possibility of showing the effect of mitigation measures.
- The knowledge on activity data is still insufficient in many countries.





University of Natural Resources
and Applied Life Sciences, Vienna

Improvement of the Austrian Air Emission Inventory

- Measure emissions from typical Austrian housing systems
- Survey farm management techniques and practices
- Detailed overview of Austrian animal husbandry
- Set up of the Austrian emission inventory with country specific data
- Proposal of feasible mitigation measures

Emission measurements in Austria



- Emissions from cattle husbandry:
 - dairy cattle – tied stall – slurry
 - dairy cattle – tied stall – solid
 - beef cattle – sloped floor system



- Emissions during farmyard manure storage:

- composting
- anaerobic stacking



Emission measurements in Austria



University of Natural Resources
and Applied Life Sciences, Vienna

■ Emissions during slurry storage:

- untreated slurry
- biogas slurry
- slurry separation
- slurry aeration
- EM-additive
- diverse covers



Emission factors dairy cattle

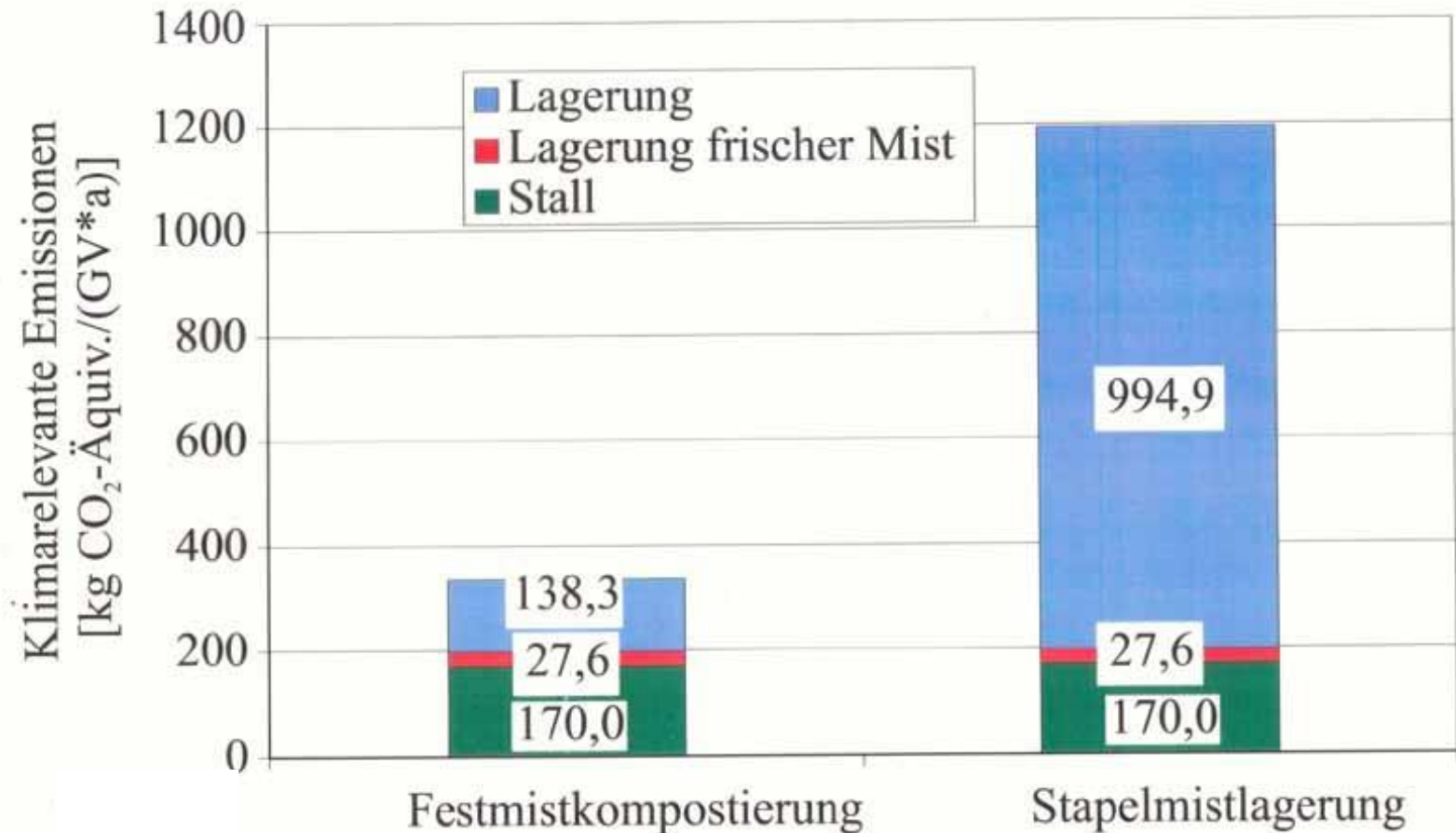


University of Natural Resources
and Applied Life Sciences, Vienna

- *loose housing system:*
 - 118 g NH₃ per kg N excretion

- *tied stall:*
 - 40 g NH₃ per kg N excretion

Greenhouse gas emissions from dairy cattle: FYM composting and anaerobic stacking



Assessment of manure management systems in Austria



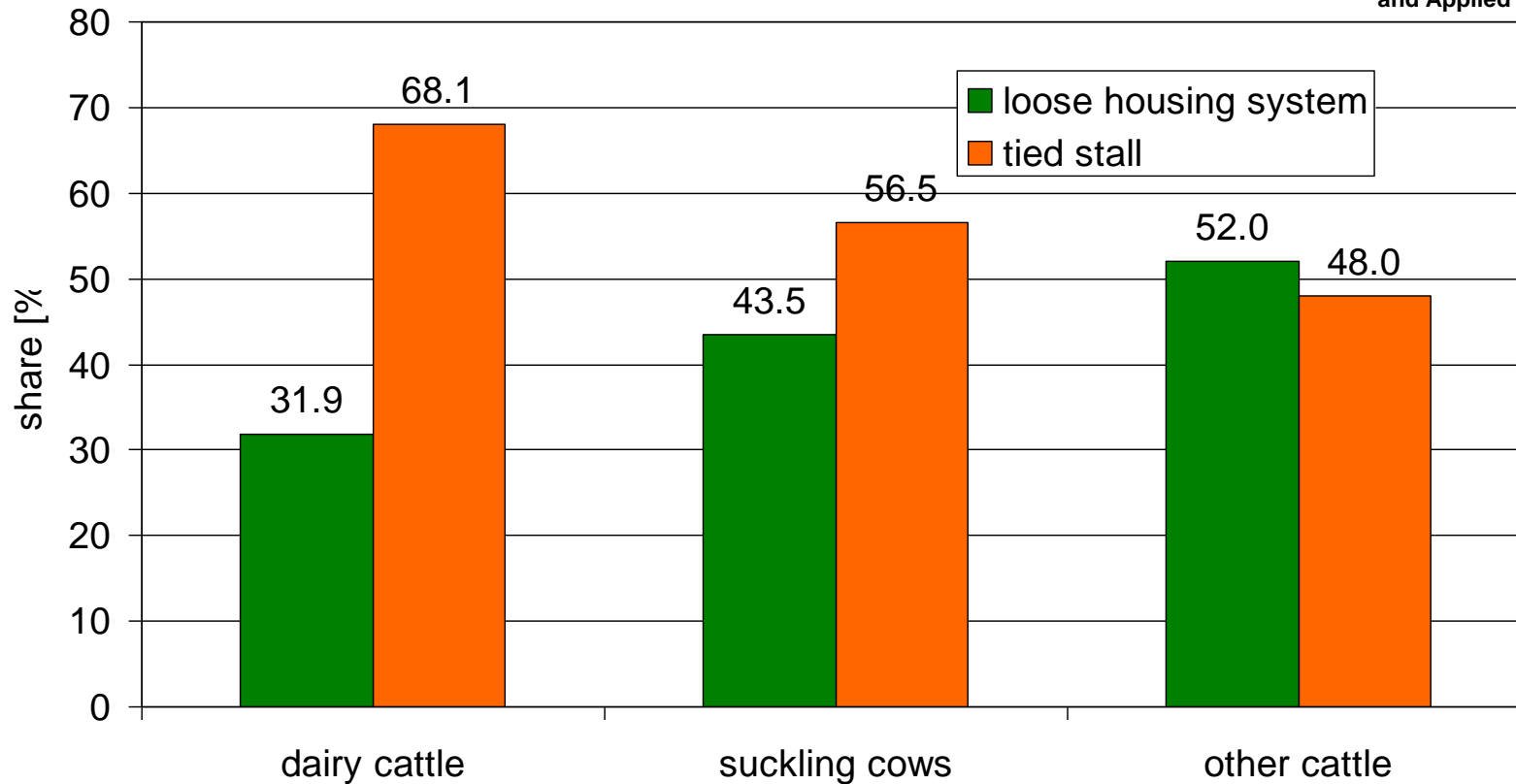
University of Natural Resources
and Applied Life Sciences, Vienna

- Questionnaire assesses relevant parameters in all stages of animal husbandry systems.
- A representative sample of 5,000 Austrian farms was selected with the help of Statistics Austria.
- The survey differentiates three Austrian regions
 - Eastern Austria
 - Southern Austria
 - Western Austria

Distribution of housing systems for cattle



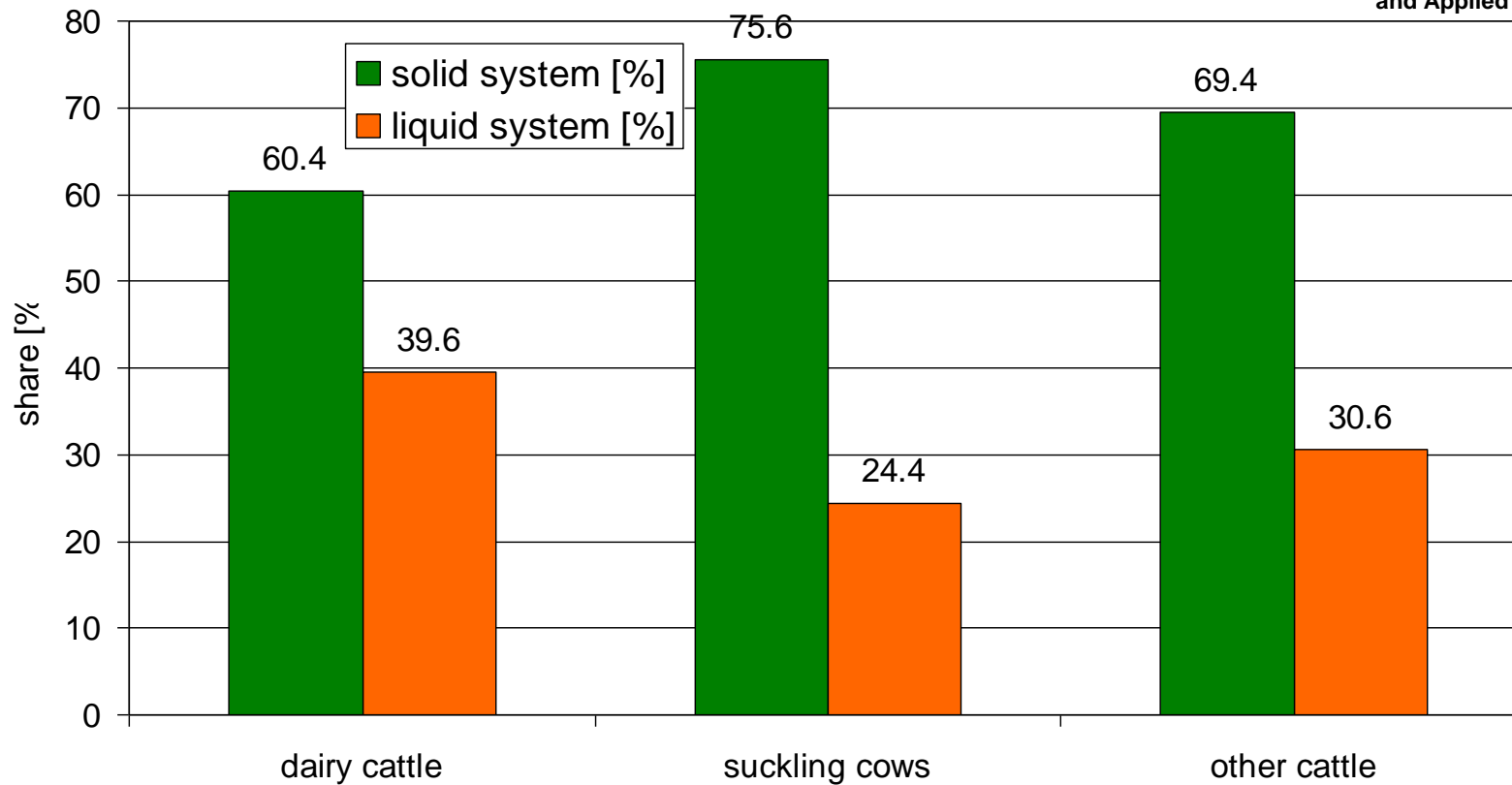
University of Natural Resources
and Applied Life Sciences, Vienna



Distribution of manure systems for cattle



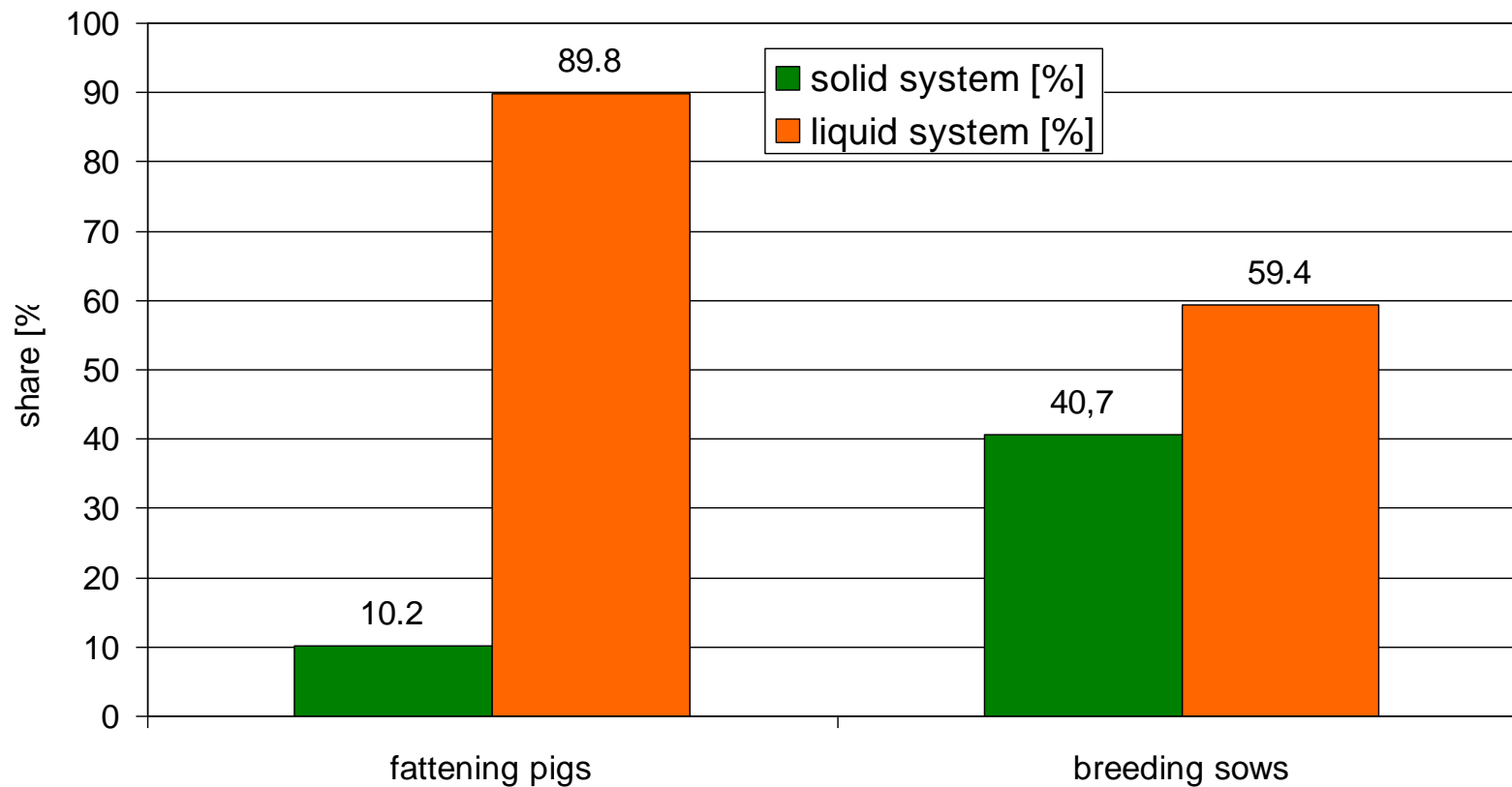
University of Natural Resources
and Applied Life Sciences, Vienna



Distribution of manure systems for pigs



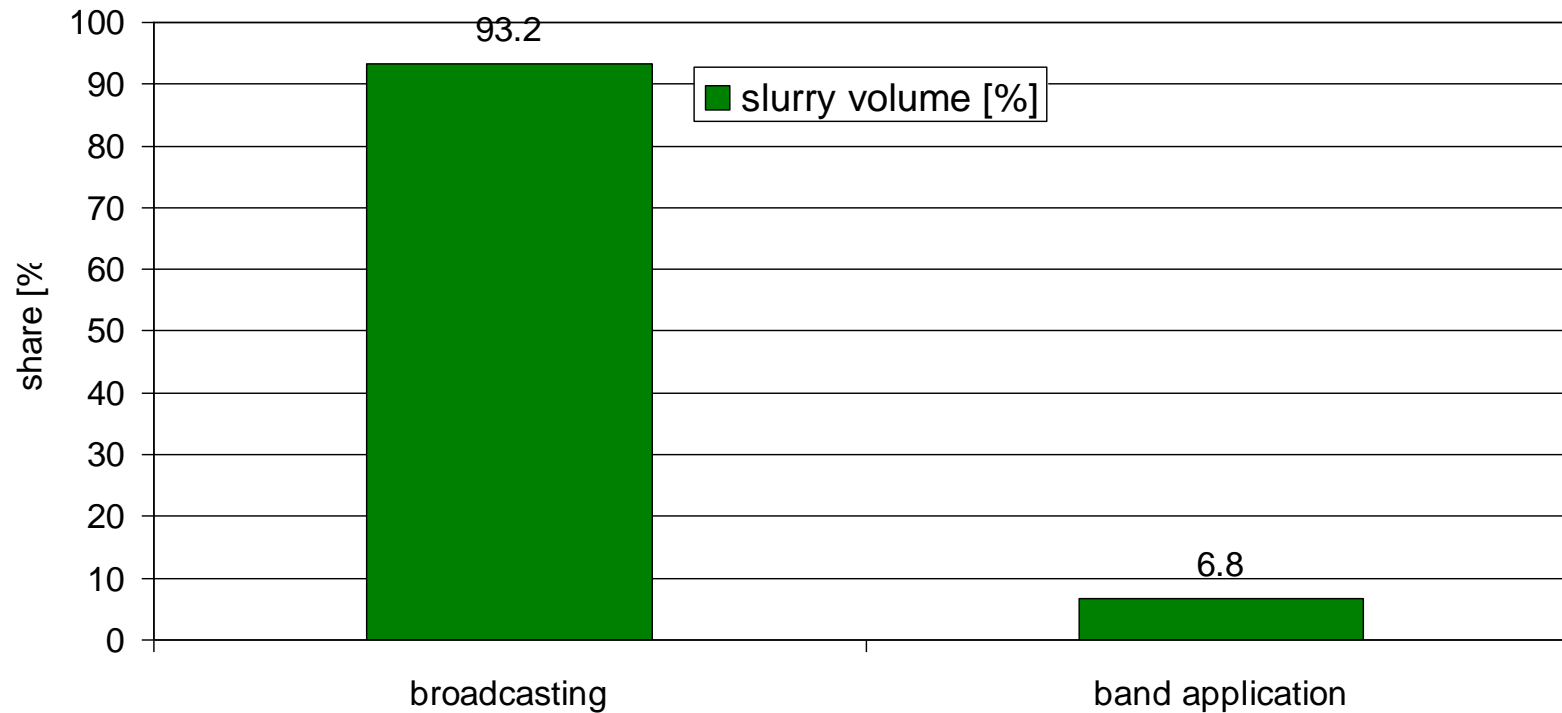
University of Natural Resources
and Applied Life Sciences, Vienna



Slurry application



University of Natural Resources
and Applied Life Sciences, Vienna

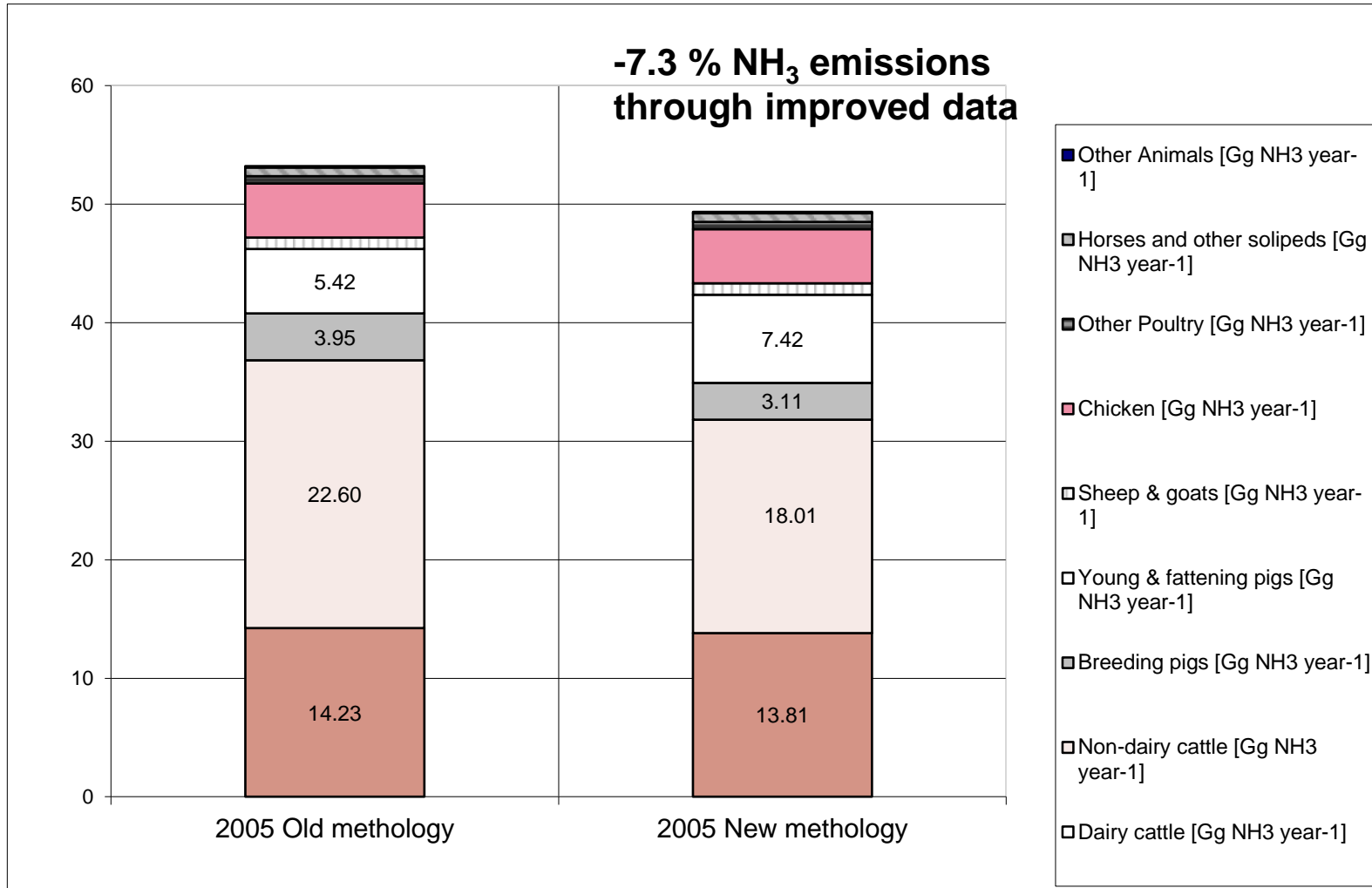




University of Natural Resources
and Applied Life Sciences, Vienna

Integration of manure management system distribution into the Austrian NH₃ emission inventory

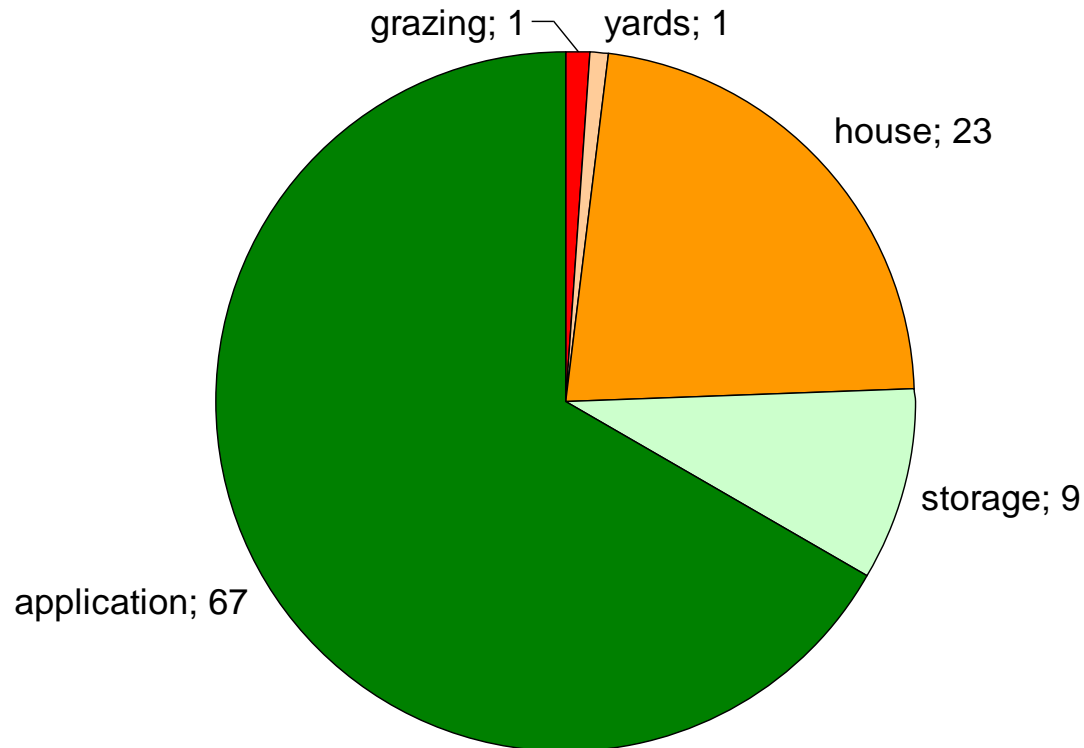
NH₃ emissions: with and without Austrian manure management system data



Contribution of manure management stages to total NH₃-N-Emissions



University of Natural Resources
and Applied Life Sciences, Vienna



Conclusions



University of Natural Resources
and Applied Life Sciences, Vienna

- Emission inventories need to be set up with country specific data on
 - Emission factors
 - Manure management system distribution.
- Activity data on farm management practices should be collected at farm level every five years.
- The targeted assessment of country specific activity data is a mandatory pre-requisite for the assessment of cost effective mitigation measures.



University of Natural Resources
and Applied Life Sciences, Vienna

University of Applied Life Sciences and Natural Resources
Department of Sustainable Agricultural Systems
Division of Agricultural Engineering

Barbara Amon, Stefan Hörtenhuber

Cooperation: Swiss College of Agriculture, Austrian Chamber of Agriculture, Austrian Environment Agency, Federal Research Centre for Agriculture in Alpine Regions, Statistics Austria

Acknowledgements. The work was funded by the Austrian Federal Ministry of Agriculture, Forestry, Environment and Water Management



umweltbundesamt^U
PERSPEKTIVEN FÜR UMWELT & GESELLSCHAFT

