



Universität für Bodenkultur Wien
Department für Raum, Landschaft
und Infrastruktur

On the aspirations of young rural women and men in Austria: a synthesis of results from migration research

Tatjana Fischer

Generational Crises in Smallholder Farming, June 3rd 2019,
BOKU Vienna



Overview



Universität für Bodenkultur Wien
Department für Raum, Landschaft
und Infrastruktur

Strategic objectives – the starting point for research

Research focus & methodological approaches

Synthesis of findings

Conclusions & questions left open



Strategic objectives – the starting point for research



Universität für Bodenkultur Wien
Department für Raum, Landschaft
und Infrastruktur

European Spatial Development Perspective (EC, 1999)

- ❖ polycentric spatial development and new urban-rural relationship
- ❖ parity of access to infrastructure and knowledge
- ❖ wise management of the natural and cultural heritage

EU's Rural Development Policy (ENRD)

- ❖ competitiveness of agriculture
- ❖ sustainable management of natural resources and climate action
- ❖ balanced territorial development of rural economies and communities

It's all about young rural people's internal migration behavior.

Research focus & methodological approaches



Universität für Bodenkultur Wien
Department für Raum, Landschaft
und Infrastruktur

various methodological approaches

case study-based research

different spatial reference levels

different depth of information

selection of target group and
perspective

born / grown up in rural
municipalities, aged 20+

retrospective „shapshots“

rural-to-urban-
migration
(„rural exodus“)

urban-to-rural-migration
(„return migration“)

migration & multi-locality
(„spatially fragmented
center of one's life“)

rural circulation
(„rural internal migration“)

dealing with spatial issues

presentation of findings

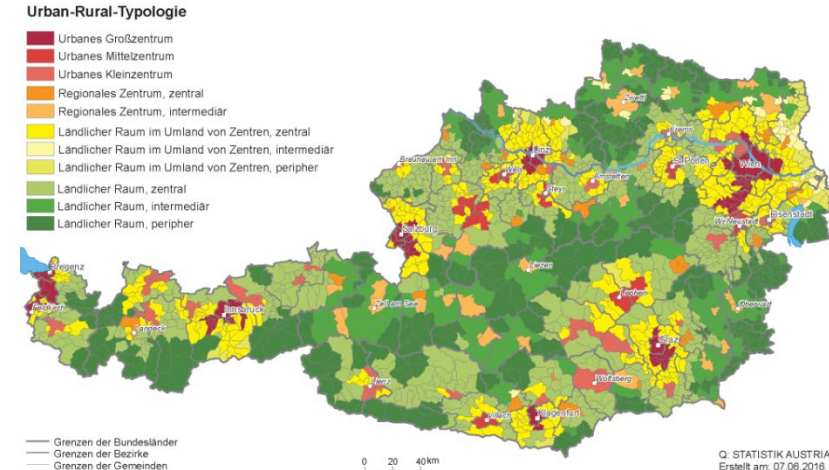
drawing conclusions

professional interest

funding

Young people of peasant origins are not in the center of research (interest).

Synthesis of findings



Target group	Type of place of origin	Reasons for migration / aspirations	Recommendations (related to attractiveness)
rural-to-urban-migrants	all types of rural areas	dependency-led („hard location factors“) + higher education + choice	infrastructure development + housing + job creation + bonding
multi-locals	all types of rural areas	dependency-led („hard and soft location factors“) for personal reasons	patience+ bonding + infrastructure development + digitalization + job creation + „modern life“ + ...
urban-to-rural-migrants	small towns, market towns, cities	amenity-led for personal reasons „a good place for children to grow up“	housing + openness + welcoming + digitalization + preserving rural amenities
rural internal migrants	all types of rural areas	for personal reasons	housing + integration

dependency-led migration behavior – amenity-focused advertising



Conclusions & questions left open



Universität für Bodenkultur Wien
Department für Raum, Landschaft
und Infrastruktur

research and recommendations focus on the needs of those who migrate, not on the needs of locals

- How to deal with increasing heterogeneity in small and structurally weak rural municipalities?
- The right people in the right places?

knowledge gap related to the process of weighing up hard and soft location factors

- individual or generational changes?

different contexts and interpretation of data

- limited reproducibility and comparability of research findings
- need for discussion on the transferability of so-called „good practices“

limitations of forecasting of both, large- and small-scale internal migration behavior

- consequences for infrastructure planning





Universität für Bodenkultur Wien
Department für Raum, Landschaft
und Infrastruktur

Thank you very much for your attention!

University of Natural Resources and Life Sciences, Vienna (BOKU)

**Department of Landscape, Spatial and Infrastructure Sciences
Institute of Spatial Planning, Environmental Planning and
Land Rearrangement (IRUB)**

Tatjana Fischer

Peter Jordan-Straße 82, A-1190 Vienna

tel.: +43 1 47654-85517

tatjana.fischer@boku.ac.at, www.rali.boku.ac.at/irub.html