

EU Forest Strategy and related developments



Unit D.4 Environment, climate change, forestry and bio-economy
DG Agriculture and Rural Development

Dan Burgar Kuželički

Brussels, 7 March 2018

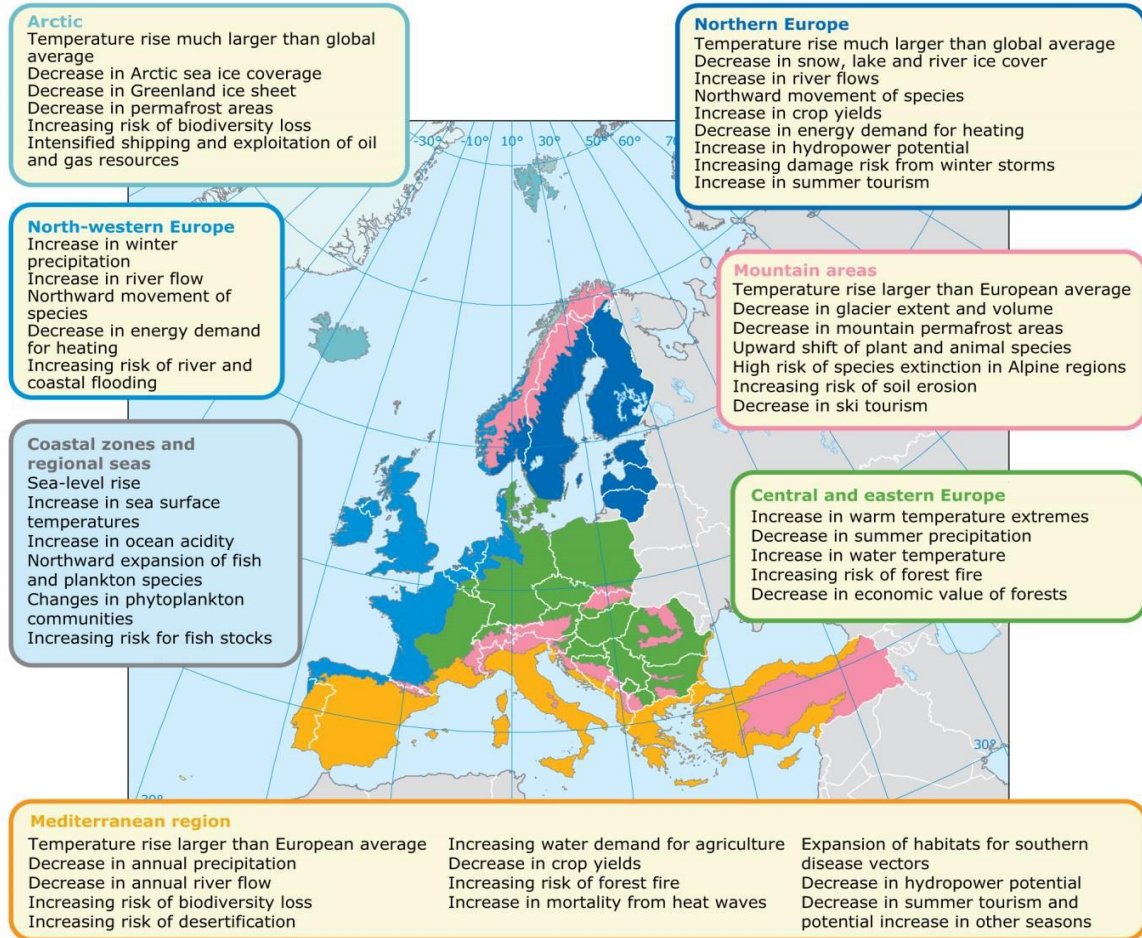
Forests in changing conditions

Changing climate

Natural disturbances

Bioeconomy

Bioenergy

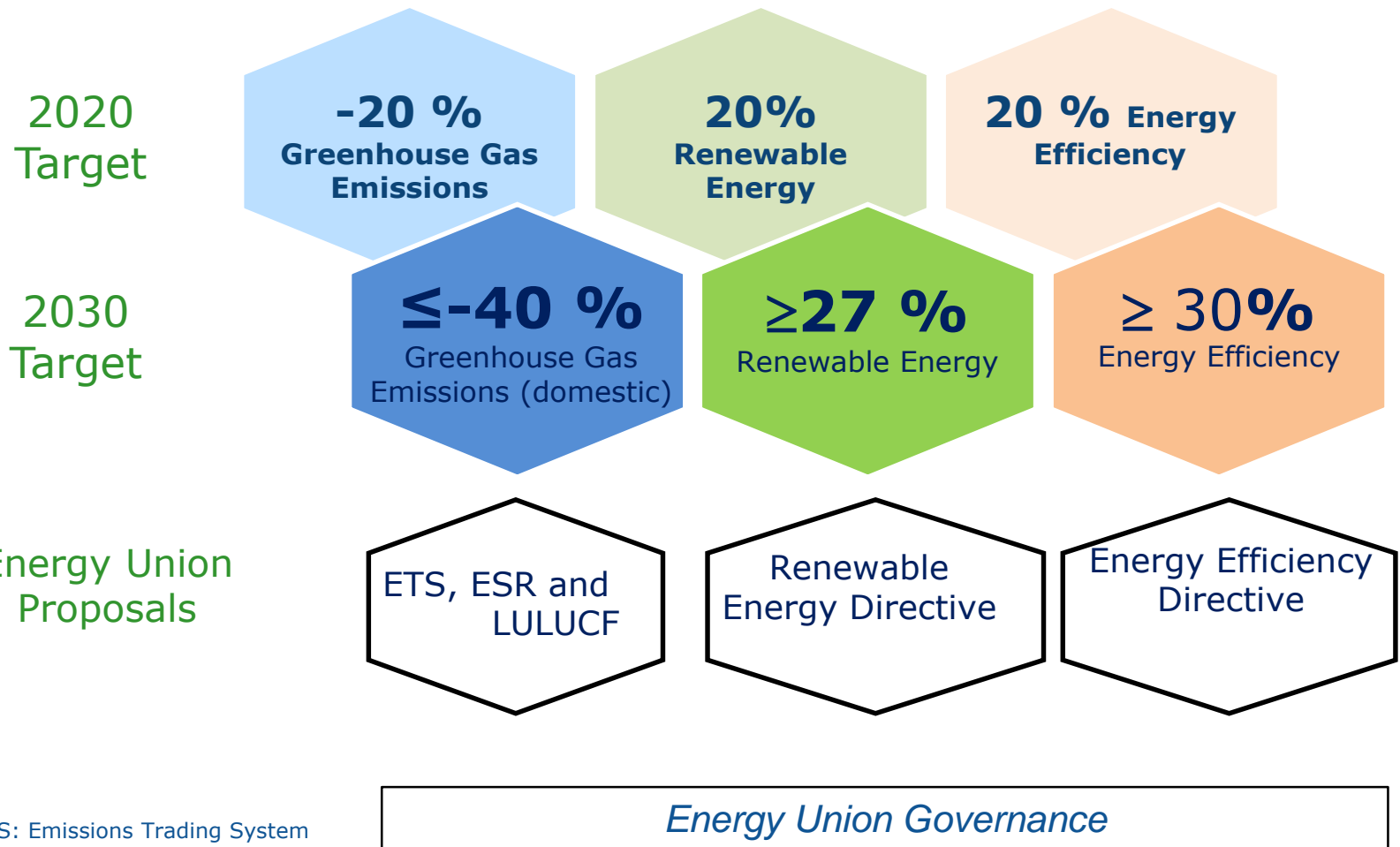


The Paris Agreement

- Global commitment to transition to a low-emission economy, holding the increase in the global temperature to well below 2C
- Highlights need to harness the potential of **land use** to contribute to global GHG mitigation efforts
- Acknowledgement of the importance of food security
- ***Entered into force 4 November 2016***



EU climate and energy framework



ETS: Emissions Trading System
ESR: Effort Sharing Regulation
LULUCF: Land Use, Land Use Change and Forestry

Effort Sharing Regulation

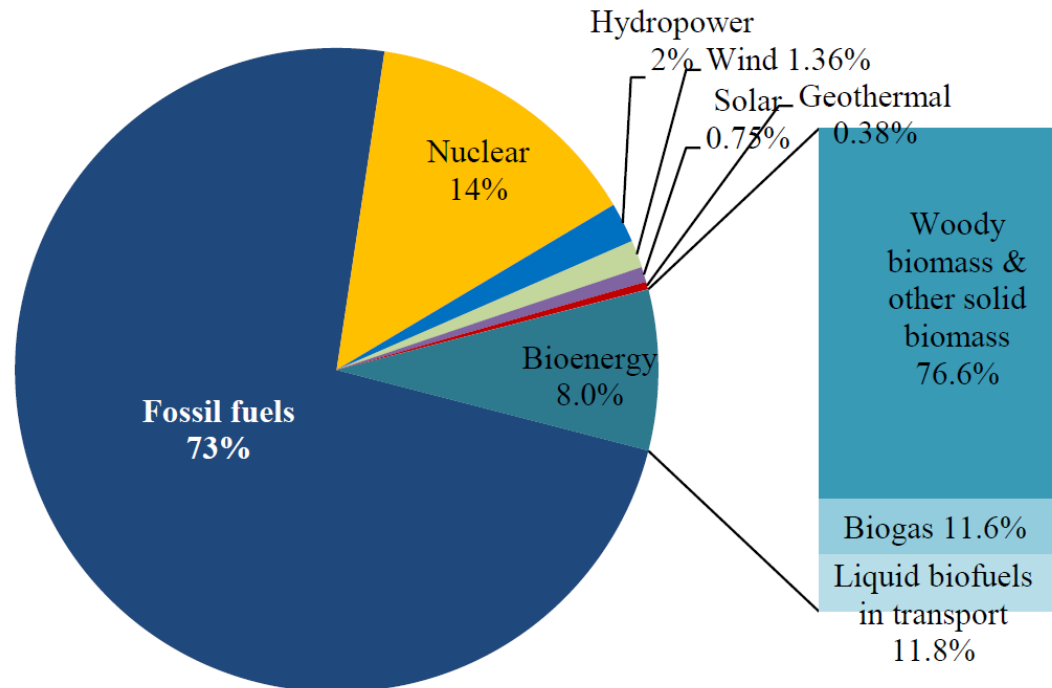
- Includes **buildings, transport, agriculture (non-CO₂), waste, F-gases**, other smaller sectors outside ETS
- Covers almost 60% of **EU greenhouse gas emissions**
- EU target (-30% by 2030) broken down **by MS**
- Sets an overall target (**no sectorial target**) by MS
- Sets rules for calculating **annual emission allocations** and evaluation of MS progress towards targets

LULUCF Land Use, Land use change and Forestry

- *Covers the following sectors: afforestation, deforestation, managed grasslands, managed croplands, managed forest*
- *Includes LULUCF into the EU climate and energy framework for the **first time** to contribute to EU's emissions reductions target,*
- ***"No debit rule"** - ensures that LULUCF contribution to the economy-wide reduction target for 2030 is at least neutral,*
- *Sets **accounting rules**, defining how to calculate emissions and removals from actions in forests and agricultural land use*
- *Introduces **flexibilities**, while continuing to incentivize additional mitigation action in the sector*

Renewable Energy Directive

- Renewable Energy Sources: 16% of total EU energy consumption
- Bioenergy: 65% of total Renewable Energy Sources
- Wood and wood waste: 70% of total bioenergy



Sustainability of biomass



Proposal strengthens the EU sustainability criteria, separated by source (agriculture biomass, forest biomass) regardless of end use

Biomass production

agriculture biomass - improved sustainability criteria



forest biomass - new sustainability scheme (i.e. risk-based approach)



Biomass end-use performance

GHG saving requirements:
Biofuels/bioliquids: 70%
Biomass & biogas for heat and power: 80%



Support to new biomass electricity only if with **combined heat and power technology** (exception for security of supply)



EU Forests play a major role in meeting the EU 2030 Climate and Energy targets, but also:

**We have
demands,
they have
solutions...**



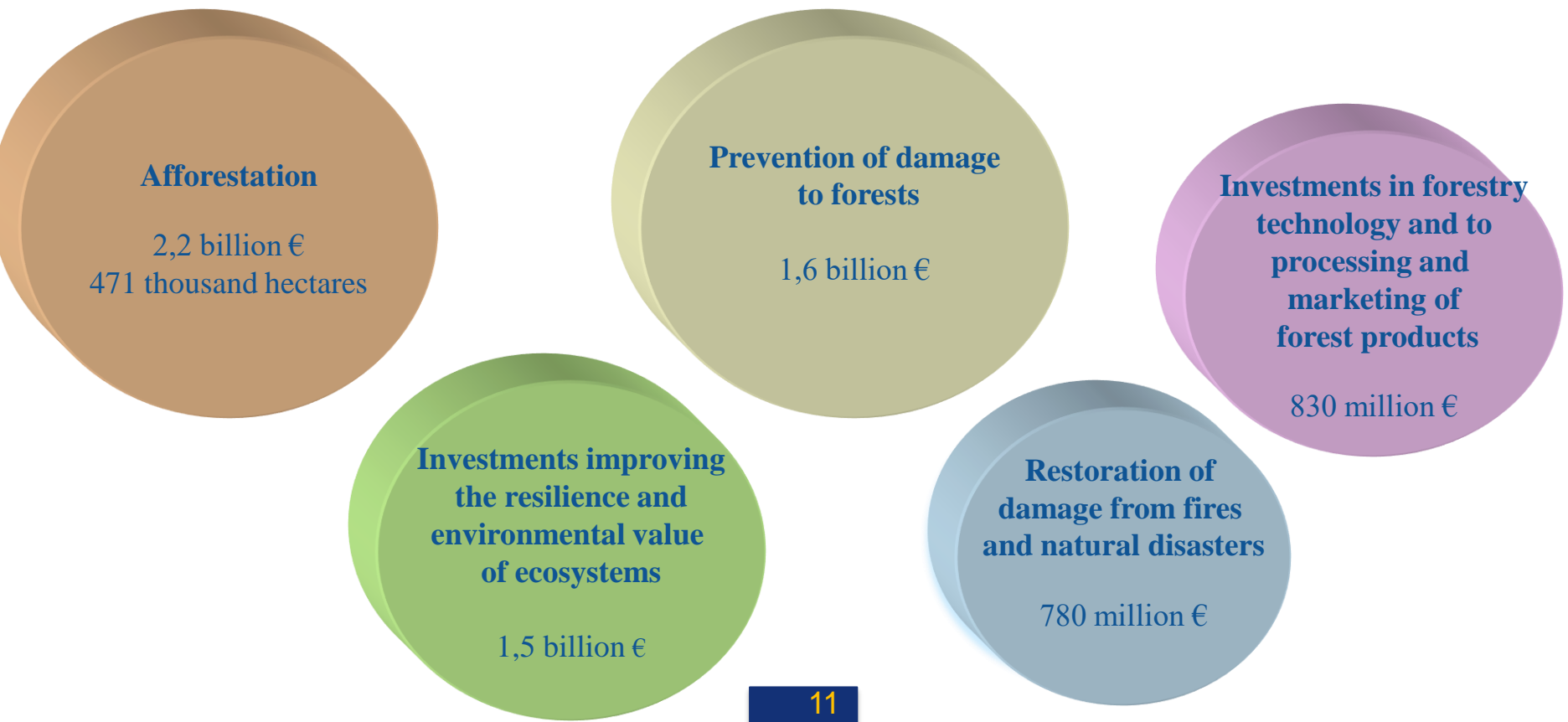


Strategy for forests and the forest sector supporting multifunctional forests

- Although there is not a Common Forest Policy in the EU Treaty, forests are a vital part of several community policies
- EU Forests Strategy ensures holistic view of forests and all related policies
- Provides for a definition of Sustainable forest management
- The guiding principles of the strategy are
 - (i) **sustainable forest management** and the multifunctional role of forests,
 - (ii) **resource efficiency**, optimising the contribution of forests and the forest sector to rural development, growth and job creation and
 - (iii) **global forest responsibility**, promoting sustainable production and consumption of forest products.
- EU Forest Strategy Multiannual Implementation Plan



- Rural Development Programmes are the EU's main instrument supporting sustainable forest management
- ~8.2 billion EUR of public expenditure programmed for 2014-2020





Thank you for your attention

For further information:
dan.burgar-kuzelicki@ec.europa.eu

<http://ec.europa.eu/agriculture/forest>